

## Recombinant Human GRIA2 Protein, His tagged

Cat. No. GRIA2-7955H Lot. No. (See product label)

### SPECIFICATION

<b>Product Overview</b>	Recombinant Human GRIA2 Protein (25-543 aa) with C-His tag was expressed in Baculovirus-Insect cells.
<b>Species</b>	Human
<b>Source</b>	Insect cells
<b>ProteinLength</b>	25-543 aa
<b>Description</b>	<p>Glutamate receptors are the predominant excitatory neurotransmitter receptors in the mammalian brain and are activated in a variety of normal neurophysiologic processes. This gene product belongs to a family of glutamate receptors that are sensitive to alpha-amino-3-hydroxy-5-methyl-4-isoxazole propionate (AMPA), and function as ligand-activated cation channels. These channels are assembled from 4 related subunits, GRIA1-4. The subunit encoded by this gene (GRIA2) is subject to RNA editing (CAG &gt; CGG; Q-&gt; R) within the second transmembrane domain, which is thought to render the channel impermeable to Ca(2+). Human and animal studies suggest that pre-mRNA editing is essential for brain function, and defective GRIA2 RNA editing at the Q/R site may be relevant to amyotrophic lateral sclerosis (ALS) etiology. Alternative splicing, resulting in transcript variants encoding different isoforms, (including the flip and flop isoforms that vary in their signal transduction properties), has been noted for this gene.</p>
<b>Source</b>	Insect cells

 Tel: 1-631-559-9269 1-516-512-3133

 Email: [info@creative-biomart.com](mailto:info@creative-biomart.com)  Fax: 1-631-938-8127

 45-1 Ramsey Road, Shirley, NY 11967, USA

<b>Species</b>	Human
<b>Tag</b>	C-His
<b>Molecular Weight</b>	59 kDa
<b>AA Sequence</b>	<p>MNSIQIGGLFPRGADQEYSAFRVGMVQFSTSEFRLTPHIDNLEVANSFAVTNAFCSQ  FSRGVYAIFGFYDKKSVNTITSFCGLHVSFITPSFPTDGTHPFVIQMRPDLKGALLSL  IEYYQWDKFAYLYDSRGLSTLQAVLDSAAEKKWQVTAINVGNINNDKKDEMYRSLF  QDLELKKERRVILDCERDKVNDIVDQVITIGKHKVGYHYIIANLGFTDGDLLKIQFGGA  NVSGFQIVDYDDSLVSKFIERWSTLEEKEYPGAHTTTIKYTSALTYDAVQVMTEAFRN  LRKQRIEISRRGNAGDCLANPAVPWGQGVIEIERALKQVQVEGLSGNIKFDQNGKRIN  YTINIMELKTNGPRKIGYWSEVDKMMVTLTELPNGNDTSGLENKTVVVTILESPYVM  MKKNHEMLEGNERYEGYCVDLAAEIAKHCGFKYKLTIVGDGKYGARDADTKIWNGM  VGELVYGKADIAIAPLTITLVREEVIDFSKPFMSLGISIMIKKPQKSKPGVFSFLDPLAH  HHHHHHH</p>
<b>Endotoxin</b>	< 1 EU/μg by LAL
<b>Purity</b>	> 90% by SDS-PAGE
<b>Storage</b>	Store it under sterile conditions at -20 to -80 centigrade. It is recommended that the protein be aliquoted for optimal storage. Avoid repeated freeze-thaw cycles.
<b>Storage Buffer</b>	Sterile PBS, pH7.4, 10% Glycerol, 5% Trehalose, 0.05% SKL
<b>Concentration</b>	1 mg/mL by Bradford
<b>GENE INFORMATION</b>	
<b>Gene Name</b>	GRIA2 glutamate receptor, ionotropic, AMPA 2 [ Homo sapiens (human) ]

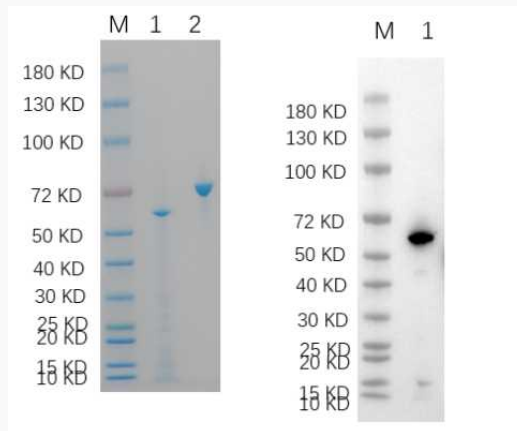
 Tel: 1-631-559-9269 1-516-512-3133

 Email: [info@creative-biomart.com](mailto:info@creative-biomart.com)  Fax: 1-631-938-8127

 45-1 Ramsey Road, Shirley, NY 11967, USA

<b>Official Symbol</b>	GRIA2
<b>Synonyms</b>	GRIA2; glutamate receptor, ionotropic, AMPA 2; GLUR2; glutamate receptor 2; GluA2; GLURB; gluR-2; gluR-B; AMPA-selective glutamate receptor 2; HBGR2; GluR-K2
<b>Gene ID</b>	2891
<b>mRNA Refseq</b>	NM_000826
<b>Protein Refseq</b>	NP_000817
<b>MIM</b>	138247
<b>UniProt ID</b>	P42262

**Reducing 4%-20% SDS-PAGE (CBB stained) and WB (Anti-His Mouse Monoclonal Antibody) analysis profiles of purified GRIA2.**



1. GRIA2
2. BSA

 Tel: 1-631-559-9269 1-516-512-3133

 Email: [info@creative-biomart.com](mailto:info@creative-biomart.com)  Fax: 1-631-938-8127

 45-1 Ramsey Road, Shirley, NY 11967, USA