

## Recombinant Human GRID1 protein, His-tagged

Cat. No. GRID1-3958H Lot. No. (See product label)

### SPECIFICATION

**Product Overview** Recombinant Human GRID1 protein(24-350 aa), fused with N-terminal His tag, was expressed in E. coli.

**Species** Human

**Source** E.coli

**ProteinLength** 24-350 aa

**Form** The purified protein was Lyophilized from sterile PBS (58mM Na<sub>2</sub>HPO<sub>4</sub>, 17mM NaH<sub>2</sub>PO<sub>4</sub>, 68mM NaCl, pH7.4). 5 % trehalose and 5 % mannitol are added as protectant before lyophilization. The elution buffer contain 300mM imidazole.

**Storage** Short-term storage: Store at 2-8°C for (1-2 weeks). Long-term storage: Aliquot and store at -20°C to -80°C for up to 3 months, reconstitution with sterile water and addition of an equal volume of glycerol. Avoid repeat freeze-thaw cycles.

**Purity** 85%, by SDS-PAGE with Coomassie Brilliant Blue staining.

### GENE INFORMATION

**Official Symbol** [GRID1](#)

**Synonyms** GRID1; glutamate receptor, ionotropic, delta 1; glutamate receptor delta-1 subunit; GluD1; KIAA1220; gluR delta-1 subunit;

 Tel: 1-631-559-9269 1-516-512-3133

 Email: [info@creative-biomart.com](mailto:info@creative-biomart.com)  Fax: 1-631-938-8127

 45-1 Ramsey Road, Shirley, NY 11967, USA

Gene ID 2894

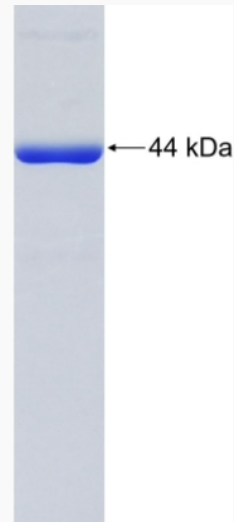
mRNA Refseq NM\_017551

Protein Refseq NP\_060021

MIM 610659

UniProt ID Q9ULK0

SDS-PAGE



Tel: 1-631-559-9269 1-516-512-3133

Email: [info@creative-biomart.com](mailto:info@creative-biomart.com) Fax: 1-631-938-8127

45-1 Ramsey Road, Shirley, NY 11967, USA