

Recombinant Human GRIN1 protein(19-559aa), 6xHis-tagged

Cat. No. GRIN1-2992H Lot. No. (See product label)

SPECIFICATION

Product Overview	Recombinant Human GRIN1 protein(19-559aa)(Q05586), fused with N-terminal 6xHis tag, was expressed in E. coli.
Species	Human
Source	E.coli
ProteinLength	19-559aa
Form	Tris-based buffer, 50% glycerol.
Molecular Mass	64.6 kDa
Purity	Greater than 90% as determined by SDS-PAGE.
Storage	Store at -20°C/-80°C upon receipt, aliquoting is necessary for mutiple use. Avoid repeated freeze-thaw cycles.
Reconstitution	It is recommended that sterile water be added to the vial to prepare a stock solution of 0.2 ug/ul. Centrifuge the vial at 4°C before opening to recover the entire contents.
AA Sequence	RAACDPKIVNIGAVLSTRKHEQMFREAVNQANKRHGSWKIQLNATSVTHKPNAIQM ALSVCEDLISSQVYAILVSHPTPNDHFTPTVSYTAGFYRIPVLGLTTRMSIYSDKSI HLSFLRTVPPYSHQSSVWFEMMRVYSWNHIILLVSDDHEGRAAQKRLETLLERES KAEKVLQFDPGTKNVTALLMEAKELEARVIILSASEDDAATVYRAAAMLNMTGSGYV

 Tel: 1-631-559-9269 1-516-512-3133

 Email: info@creative-biomart.com  Fax: 1-631-938-8127

 45-1 Ramsey Road, Shirley, NY 11967, USA

WLVGEREISGNALRYAPDGILGLQLINGKNESAHISDAVGVVAQAVHELLEKENITDP
 PRGCVGNTNIWKTGPLFKRVLMSKYADGVTGRVEFNEDGDRKFANYSIMNLQNR
 KLVQVGIYNGTHVIPNDRKIIWPGGETEKPRGYQMSTRCLKIVTIHQEPFVYVKPTLSD
 GTCKEEFTVNGDPVKKVICTGPNDTSPGSPRHTVPQCCYGFCDLLIKLARTMNFTY
 EVHLVADGKFGTQERVNNSNKKEWNGMMGELLSGQADMIVAPLTINNERAQYIEFS
 KPFGYQGLTILVKKEIPRSTLDSFMQPFQ

GENE INFORMATION

Gene Name [GRIN1 glutamate receptor, ionotropic, N-methyl D-aspartate 1 \[Homo sapiens \]](#)

Official Symbol [GRIN1](#)

Synonyms

GluN1; Glutamate [NMDA] receptor subunit zeta-1; Glutamate receptor ionotropic N methyl D aspartate 1; Glutamate receptor ionotropic, N-methyl-D aspartate, subunit 1; glutamate receptor ionotropic, NMDA 1; Grin1; MRD8; N methyl D aspartate receptor; N methyl D aspartate receptor channel subunit zeta 1; N methyl D aspartate receptor subunit NR1; N-methyl-D-aspartate receptor subunit NR1; NMD-R1; NMDA 1; NMDA R1; NMDA receptor 1; NMDA1; NMDAR; NMDZ1_HUMAN; NR1

Gene ID [2902](#)

mRNA Refseq [NM_000832](#)

Protein Refseq [NP_000823](#)

MIM [138249](#)

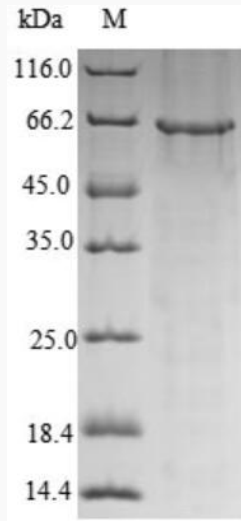
UniProt ID [Q05586](#)

 Tel: 1-631-559-9269 1-516-512-3133

 Email: info@creative-biomart.com  Fax: 1-631-938-8127

 45-1 Ramsey Road, Shirley, NY 11967, USA

SDS-PAGE



 Tel: 1-631-559-9269 1-516-512-3133

 Email: info@creative-biomart.com  Fax: 1-631-938-8127

 45-1 Ramsey Road, Shirley, NY 11967, USA