

# Recombinant Full Length Human GRIN1 Protein, C-Flag-tagged

**Cat. No.** GRIN1-418HFL    **Lot. No.** (See product label)

## SPECIFICATION

<b>Product Overview</b>	Recombinant Full Length Human GRIN1 Protein, fused to Flag-tag at C-terminus, was expressed in Mammalian cells.
<b>Species</b>	Human
<b>Source</b>	Mammalian Cells
<b>Description</b>	The protein encoded by this gene is a critical subunit of N-methyl-D-aspartate receptors, members of the glutamate receptor channel superfamily which are heteromeric protein complexes with multiple subunits arranged to form a ligand-gated ion channel. These subunits play a key role in the plasticity of synapses, which is believed to underlie memory and learning. Cell-specific factors are thought to control expression of different isoforms, possibly contributing to the functional diversity of the subunits. Alternatively spliced transcript variants have been described.
<b>Form</b>	25 mM Tris HCl, pH 7.3, 100 mM glycine, 10% glycerol.
<b>Molecular Mass</b>	103.4 kDa
<b>AA Sequence</b>	MSTMRLLLTALLFSCSVARAACDPKIVNIGAVLSTRKHEQMFREAVNQANKRHGSW KIQLNATSVTHKPN AIQMALSVCEDLISSQVYAILVSHPPTPNDFHTPTVSYTAGFY RIPVLGLTTRMSIYSDKSIHLSFLRT VPPYSHQSSVWFEMMRVYSWNHIILLVSSDHE GRAAQKRLETLLEERESKAEKVLQFDPGTKNVTALLME AKELEARVIILSASEDDAA TVYRAAAMLNMTGSGYVWLVGEREISGNALRYAPDGILGLQLINGKNESAH ISDAV

 Tel: 1-631-559-9269    1-516-512-3133

 Email: [info@creative-biomart.com](mailto:info@creative-biomart.com)     Fax: 1-631-938-8127

 45-1 Ramsey Road, Shirley, NY 11967, USA

GVVAQAVHELLEKENITDPPRGCVGNTNIWKTGPLFKRVLMSKYADGVTGRVEFN  
 EDGDRKFAN YSIMNLQNRKLVQVGIYNGTHVIPNDRKIIWPGGETEKPRGYQMSTR  
 LKIVTIHQEPFVYVKPTLSDGTC KEEFTVNGDPVKKVICTGPNDTSPGSPRHTVPQC  
 CYGFCIDLLIKLARTMNFTYEVHLVADGKFGTQERV NNSNKKEWNGMMGELLSGQ  
 ADMIVAPLTINNERAQYIEFSKPFKYQGLTILVKKEIPRSTLDSFMQPFQS TLWLLVGL  
 SVHVVAVMLYLLDRFSPFGRFKVNSEEEEEEDALTLSSAMWFSWGVLLNSGIGEGAP  
 RSFSAR ILGMVWAGFAMIIVASYTANLAAFLVDRPEERITGINDPRLRNPSDKFIYAT  
 VKQSSVDIYFRRQVELS TMYRHMEKHNYESAAEAIQAVRDNKLHAFIWDSAVLEFE  
 ASQKCDLVTTGELFFRSGFGIGMRKDSPWKQ NVSLSILKSHENGFMEDLDKTWVR  
 YQECDRSRNAPATLTFENMAGVFMLVAGGIVAGIFLIFIEIAYKRH KDARRKQMQLAF  
 AAVNVWRKNLQDRKSGRAEPDPKKKATFRAITSTLASSFKRRRSSKDTSTGGGRGA  
 LQ  
 NQKDTVLPRAIEREEGQLQLCSRHRESTRTRPLEQKLISEEDLAANDILDYKDDDD  
 KV

<b>Purity</b>	> 80% as determined by SDS-PAGE and Coomassie blue staining.
<b>Stability</b>	Stable for 12 months from the date of receipt of the product under proper storage and handling conditions. Avoid repeated freeze-thaw cycles.
<b>Storage</b>	Store at -80 centigrade.
<b>Concentration</b>	>50 ug/mL as determined by microplate BCA method.
<b>Preparation</b>	Recombinant protein was captured through anti-DDK affinity column followed by conventional chromatography steps.
<b>Protein Families</b>	Druggable Genome, Ion Channels: Glutamate Receptors, Transmembrane
<b>Protein Pathways</b>	Alzheimer's disease, Amyotrophic lateral sclerosis (ALS), Calcium signaling pathway,

 Tel: 1-631-559-9269 1-516-512-3133

 Email: [info@creative-biomart.com](mailto:info@creative-biomart.com)  Fax: 1-631-938-8127

 45-1 Ramsey Road, Shirley, NY 11967, USA

Huntington's disease, Long-term potentiation, Neuroactive ligand-receptor interaction

**Full Length** Full L.

## GENE INFORMATION

**Gene Name** [GRIN1 glutamate ionotropic receptor NMDA type subunit 1 \[ Homo sapiens \(human\) \]](#)

**Official Symbol** [GRIN1](#)

**Synonyms** NR1; MRD8; GluN1; NMDA1; DEE101; NDHMSD; NDHMSR; NMD-R1; NMDAR1

**Gene ID** [2902](#)

**mRNA Refseq** [NM\\_007327.4](#)

**Protein Refseq** [NP\\_015566.1](#)

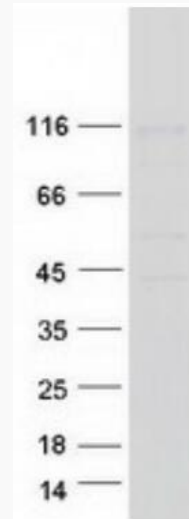
**MIM** [138249](#)

**UniProt ID** [Q05586](#)

 Tel: 1-631-559-9269 1-516-512-3133

 Email: [info@creative-biomart.com](mailto:info@creative-biomart.com)  Fax: 1-631-938-8127

 45-1 Ramsey Road, Shirley, NY 11967, USA



Coomassie blue staining of purified GRIN1 protein.

 Tel: 1-631-559-9269 1-516-512-3133

 Email: [info@creative-biomart.com](mailto:info@creative-biomart.com)  Fax: 1-631-938-8127

 45-1 Ramsey Road, Shirley, NY 11967, USA