

Recombinant Human GRIN1 Protein, GST-tagged

Cat. No. GRIN1-5344H **Lot. No.** (See product label)

SPECIFICATION

Product Overview	Human GRIN1 partial ORF (NP_015566, 21 a.a. - 120 a.a.) recombinant protein with GST-tag at N-terminal.
Species	Human
Source	Wheat Germ
Description	The protein encoded by this gene is a critical subunit of N-methyl-D-aspartate receptors, members of the glutamate receptor channel superfamily which are heteromeric protein complexes with multiple subunits arranged to form a ligand-gated ion channel. These subunits play a key role in the plasticity of synapses, which is believed to underlie memory and learning. Cell-specific factors are thought to control expression of different isoforms, possibly contributing to the functional diversity of the subunits. Alternatively spliced transcript variants have been described. [provided by RefSeq]
Molecular Mass	36.74 kDa
AA Sequence	ACDPKIVNIGAVLSTRKHEQMFREAVNQANKRHGSKIQLNATSVTHKPNAIQMALS VCEDLISSQVYAILVSHPTPNDFHTPTVSYTAGFYRIPVLG
Applications	Enzyme-linked Immunoabsorbent Assay Western Blot (Recombinant protein) Antibody Production Protein Array

 Tel: 1-631-559-9269 1-516-512-3133

 Email: info@creative-biomart.com  Fax: 1-631-938-8127

 45-1 Ramsey Road, Shirley, NY 11967, USA

Notes	Best use within three months from the date of receipt of this protein.
Storage	Store at -80 centigrade. Aliquot to avoid repeated freezing and thawing.
Storage Buffer	50 mM Tris-HCl, 10 mM reduced Glutathione, pH=8.0 in the elution buffer.

GENE INFORMATION

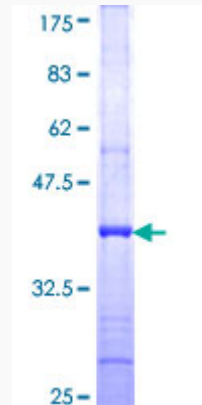
Gene Name	GRIN1 glutamate receptor, ionotropic, N-methyl D-aspartate 1 [Homo sapiens]
Official Symbol	GRIN1
Synonyms	GRIN1; glutamate receptor, ionotropic, N-methyl D-aspartate 1; NMDAR1; glutamate [NMDA] receptor subunit zeta-1; GluN1; NMD-R1; glutamate [NMDA] receptor subunit zeta 1; N-methyl-D-aspartate receptor subunit NR1; N-methyl-D-aspartate receptor channel, subunit zeta-1; NR1; MRD8; NMDA1;
Gene ID	2902
mRNA Refseq	NM_000832
Protein Refseq	NP_000823
MIM	138249
UniProt ID	Q05586

 Tel: 1-631-559-9269 1-516-512-3133

 Email: info@creative-biomart.com  Fax: 1-631-938-8127

 45-1 Ramsey Road, Shirley, NY 11967, USA

**Quality Control
Testing**



12.5% SDS-PAGE Stained with Coomassie Blue.

 Tel: 1-631-559-9269 1-516-512-3133

 Email: info@creative-biomart.com  Fax: 1-631-938-8127

 45-1 Ramsey Road, Shirley, NY 11967, USA