

Recombinant Human GRIN2A Protein (501-550 aa & 601-630 aa & 701-750 aa), His-tagged

Cat. No. GRIN2A-1264H Lot. No. (See product label)

SPECIFICATION

Product Overview	Recombinant Human GRIN2A Protein (501-550 aa & 601-630 aa & 701-750 aa) is produced by E. coli expression system. This protein is fused with a 6xHis tag at the N-terminal. Research Area: Transport. Protein Description: Partial.
Species	Human
Source	E.coli
ProteinLength	501-550 aa & 601-630 aa & 701-750 aa
Description	NMDA receptor subtype of glutamate-gated ion channels possesses high calcium permeability and voltage-dependent sensitivity to magnesium. Activation requires binding of agonist to both types of subunits.
Form	Tris-based buffer,50% glycerol
Molecular Mass	18.2 kDa
AA Sequence	VYQRAVMAVGSLTINEERSEVDFSVPFVETGISVMVSRNNGTVSPSAFLIGKAIWLL WGLVFNNSVPVQNPKGTTSKIMMHQYMTKFNQKGVEDALVSLKTGKLDAFIYDAAV LNYKAGRDEGCKLVTI
Purity	> 90% as determined by SDS-PAGE.

 Tel: 1-631-559-9269 1-516-512-3133

 Email: info@creative-biomart.com  Fax: 1-631-938-8127

 45-1 Ramsey Road, Shirley, NY 11967, USA

Notes	Repeated freezing and thawing is not recommended. Store working aliquots at 4 centigrade for up to one week.
Storage	The shelf life is related to many factors, storage state, buffer ingredients, storage temperature and the stability of the protein itself. Generally, the shelf life of liquid form is 6 months at -20 centigrade/-80 centigrade. The shelf life of lyophilized form is 12 months at -20 centigrade/-80 centigrade.
Concentration	A hardcopy of COA with reconstitution instruction is sent along with the products. Please refer to it for detailed information.

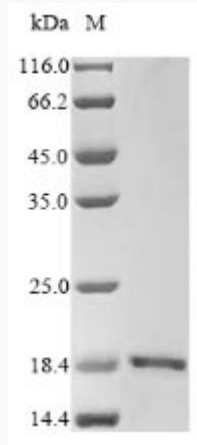
GENE INFORMATION

Gene Name	GRIN2A glutamate receptor, ionotropic, N-methyl D-aspartate 2A [Homo sapiens]
Official Symbol	GRIN2A
Synonyms	GRIN2A; NMDAR2A; GluN2A; hNR2A; EPND; NR2A;
Gene ID	2903
mRNA Refseq	NM_000833
Protein Refseq	NP_000824
MIM	138253
UniProt ID	Q12879

 Tel: 1-631-559-9269 1-516-512-3133

 Email: info@creative-biomart.com  Fax: 1-631-938-8127

 45-1 Ramsey Road, Shirley, NY 11967, USA



(Tris-Glycine gel) Discontinuous SDS-PAGE (reduced) with 5% enrichment gel and 15% separation gel.

 Tel: 1-631-559-9269 1-516-512-3133

 Email: info@creative-biomart.com  Fax: 1-631-938-8127

 45-1 Ramsey Road, Shirley, NY 11967, USA