

Recombinant Human GRIN2A protein(971-1050 aa), C-His-tagged

Cat. No. GRIN2A-2835H **Lot. No.** (See product label)

SPECIFICATION

Product Overview	Recombinant Human GRIN2A protein(Q12879)(971-1050 aa), fused with C-terminal His tag, was expressed in E. coli.
Species	Human
Source	E.coli
ProteinLength	971-1050 aa
Form	0.15 M Phosphate buffered saline
Molecular Mass	11 kDa
Storage	Shipped on dry ice. Avoid repeated freeze-thaw cycles. Upon receipt, 2 days when stored at 2 to 8 °C after thawing. Up to 12 months when aliquoted and stored at -20 to -80°C.
Reconstitution	It is recommended that sterile water be added to the vial to prepare a stock solution of 0.2 ug/ul. Centrifuge the vial at 4°C before opening to recover the entire contents.
AA Sequence	QKDNLNYYVFQGGHPLTLNESNPNTVEVAVSTESKANSRPRQLWKKSVDLSIRQDSL SQNPVSRDEATAENRTHSLKSPR

GENE INFORMATION

 Tel: 1-631-559-9269 1-516-512-3133

 Email: info@creative-biomart.com  Fax: 1-631-938-8127

 45-1 Ramsey Road, Shirley, NY 11967, USA

Gene Name	GRIN2A glutamate receptor, ionotropic, N-methyl D-aspartate 2A [Homo sapiens]
Official Symbol	GRIN2A
Synonyms	GRIN2A; glutamate receptor, ionotropic, N-methyl D-aspartate 2A; NMDAR2A; glutamate [NMDA] receptor subunit epsilon-1; GluN2A; hNR2A; NMDA receptor subtype 2A; N-methyl D-aspartate receptor subtype 2A; N-methyl-D-aspartate receptor subunit 2A; N-methyl-D-aspartate receptor channel, subunit epsilon-1; EPND; NR2A;
Gene ID	2903
mRNA Refseq	NM_000833
Protein Refseq	NP_000824
MIM	138253
UniProt ID	Q12879

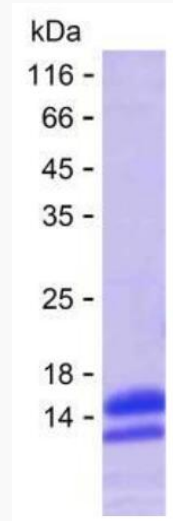
 Tel: 1-631-559-9269 1-516-512-3133

 Email: info@creative-biomart.com  Fax: 1-631-938-8127

 45-1 Ramsey Road, Shirley, NY 11967, USA



SDS-PAGE



Tel: 1-631-559-9269 1-516-512-3133

Email: info@creative-biomart.com Fax: 1-631-938-8127

45-1 Ramsey Road, Shirley, NY 11967, USA