

Recombinant Human GRIN2A protein, His-tagged

Cat. No. GRIN2A-5732H Lot. No. (See product label)

SPECIFICATION

Product Overview	Recombinant Human GRIN2A protein(933-1127 aa), fused with N-terminal His tag, was expressed in E.coli.
Species	Human
Source	E.coli
ProteinLength	933-1127 aa
Form	The purified protein was Lyophilized from sterile PBS (58mM Na ₂ HPO ₄ , 17mM NaH ₂ PO ₄ , 68mM NaCl, pH7.4). 5 % trehalose and 5 % mannitol are added as protectant before lyophilization. The elution buffer contain 300mM imidazole.
AASequence	DMVSDKGNLMYSDNRSFQGKESIFGDNMNELQTFVANRQKDNLNNYVFQGGHPLT LNESNPNTVEVAVSTESKANSRPRQLWKKSVDSIRQDSLSQNPVSQRDEATAENRT HSLKSPRYLPEEMAHSDISETSNRATCHREPDNSKNHKTKNDFKRSVASKYPKDCS EVERTYLKTKSSSPRDKIYTIDGKEPG
Purity	85%, by SDS-PAGE with Coomassie Brilliant Blue staining.
Storage	Store at 2-8°C for 1-2 weeks. Aliquot and store at -20°C to -80°C for up to 3 months, reconstitution with sterile water and addition of an equal volume of glycerol. Avoid repeat freeze-thaw cycles.
Reconstitution	Dissolve the product in 200 µl sterile water to achieve a working concentration of 0.25

 Tel: 1-631-559-9269 1-516-512-3133

 Email: info@creative-biomart.com  Fax: 1-631-938-8127

 45-1 Ramsey Road, Shirley, NY 11967, USA

g/μl. If experimental compatibility allows, mix the aqueous solution with an equal volume of glycerol (1:1 ratio) after initial reconstitution.

GENE INFORMATION

Gene Name	GRIN2A glutamate receptor, ionotropic, N-methyl D-aspartate 2A [Homo sapiens]
Official Symbol	GRIN2A
Synonyms	GRIN2A; glutamate receptor, ionotropic, N-methyl D-aspartate 2A; NMDAR2A; glutamate [NMDA] receptor subunit epsilon-1; GluN2A; hNR2A; NMDA receptor subtype 2A; N-methyl D-aspartate receptor subtype 2A; N-methyl-D-aspartate receptor subunit 2A; N-methyl-D-aspartate receptor channel, subunit epsilon-1; EPND; NR2A;
Gene ID	2903
mRNA Refseq	NM_000833
Protein Refseq	NP_000824
MIM	138253
UniProt ID	Q12879

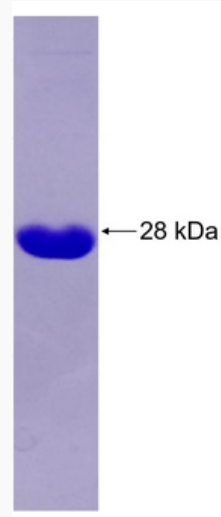
 Tel: 1-631-559-9269 1-516-512-3133

 Email: info@creative-biomart.com  Fax: 1-631-938-8127

 45-1 Ramsey Road, Shirley, NY 11967, USA



SDS-PAGE



☎ Tel: 1-631-559-9269 1-516-512-3133

☎ Email: info@creative-biomart.com ☎ Fax: 1-631-938-8127

☎ 45-1 Ramsey Road, Shirley, NY 11967, USA