

Recombinant Human GRIN2A protein, GST-tagged

Cat. No. GRIN2A-5733H Lot. No. (See product label)

SPECIFICATION

Product Overview	Recombinant Human GRIN2A protein(1000-1127 aa), fused with N-terminal GST tag, was expressed in E. coli.
Species	Human
Source	E.coli
ProteinLength	1000-1127 aa
Form	The purified protein was Lyophilized from sterile PBS (58mM Na ₂ HPO ₄ , 17mM NaH ₂ PO ₄ , 68mM NaCl, pH8.). 5 % trehalose and 5 % mannitol are added as protectant before lyophilization. The elution buffer contain 100mM GSH.
Storage	Short-term storage: Store at 2-8°C for (1-2 weeks). Long-term storage: Aliquot and store at -20°C to -80°C for up to 3 months, reconstitution with sterile water and addition of an equal volume of glycerol. Avoid repeat freeze-thaw cycles.
Purity	90%, by SDS-PAGE with Coomassie Brilliant Blue staining.

GENE INFORMATION

Official Symbol	GRIN2A
Synonyms	GRIN2A; glutamate receptor, ionotropic, N-methyl D-aspartate 2A; NMDAR2A; glutamate [NMDA] receptor subunit epsilon-1; GluN2A; hNR2A; NMDA receptor

 Tel: 1-631-559-9269 1-516-512-3133

 Email: info@creative-biomart.com  Fax: 1-631-938-8127

 45-1 Ramsey Road, Shirley, NY 11967, USA

subtype 2A; N-methyl D-aspartate receptor subtype 2A; N-methyl-D-aspartate receptor subunit 2A; N-methyl-D-aspartate receptor channel, subunit epsilon-1; EPND; NR2A;

Gene ID 2903

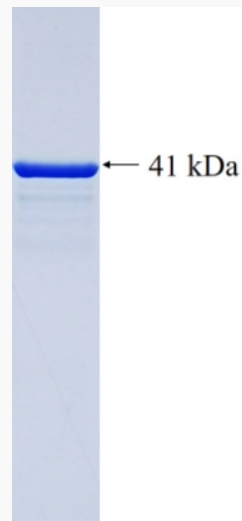
mRNA Refseq NM_000833

Protein Refseq NP_000824

MIM 138253

UniProt ID Q12879

SDS-PAGE



 Tel: 1-631-559-9269 1-516-512-3133

 Email: info@creative-biomart.com  Fax: 1-631-938-8127

 45-1 Ramsey Road, Shirley, NY 11967, USA