

Recombinant Human GRIN2B protein(1251-1380 aa), C-His-tagged

Cat. No. GRIN2B-2848H **Lot. No.** (See product label)

SPECIFICATION

Product Overview	Recombinant Human GRIN2B protein(Q13224)(1251-1380 aa), fused with C-terminal His tag, was expressed in E. coli.
Species	Human
Source	E.coli
ProteinLength	1251-1380 aa
Form	0.15 M Phosphate buffered saline
Molecular Mass	17.5 kDa
Storage	Shipped on dry ice. Avoid repeated freeze-thaw cycles. Upon receipt, 2 days when stored at 2 to 8 °C after thawing. Up to 12 months when aliquoted and stored at -20 to -80°C.
Reconstitution	It is recommended that sterile water be added to the vial to prepare a stock solution of 0.2 ug/ul. Centrifuge the vial at 4°C before opening to recover the entire contents.
AA Sequence	LYDISEDNSLQELDQPAAPVAVTSNASTTKYPQSPTNSKAQKKNRNKLRQHSYDT FVDLQKEEAALAPRSVSLKDKGRFMDGSPYAHMFEMSAGESTFANNKSSVPTAGH HHHNNPGGGYMLSKSLYPD

 Tel: 1-631-559-9269 1-516-512-3133

 Email: info@creative-biomart.com  Fax: 1-631-938-8127

 45-1 Ramsey Road, Shirley, NY 11967, USA

GENE INFORMATION

Gene Name GRIN2B glutamate receptor, ionotropic, N-methyl D-aspartate 2B [Homo sapiens]

Official Symbol GRIN2B

Synonyms GRIN2B; glutamate receptor, ionotropic, N-methyl D-aspartate 2B; NMDAR2B; glutamate [NMDA] receptor subunit epsilon-2; GluN2B; NR3; glutamate receptor subunit epsilon-2; N-methyl-D-aspartate receptor subunit 3; N-methyl D-aspartate receptor subtype 2B; MRD6; NR2B; hNR3; MGC142178; MGC142180;

Gene ID 2904

mRNA Refseq NM_000834

Protein Refseq NP_000825

MIM 138252

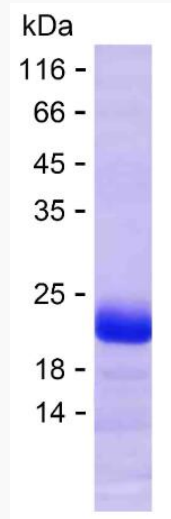
UniProt ID Q13224

 Tel: 1-631-559-9269 1-516-512-3133

 Email: info@creative-biomart.com  Fax: 1-631-938-8127

 45-1 Ramsey Road, Shirley, NY 11967, USA

SDS-PAGE



 Tel: 1-631-559-9269 1-516-512-3133

 Email: info@creative-biomart.com  Fax: 1-631-938-8127

 45-1 Ramsey Road, Shirley, NY 11967, USA