

Recombinant Human GRIN2C Protein, GST-tagged

Cat. No. GRIN2C-5346H Lot. No. (See product label)

SPECIFICATION

Product Overview	Human GRIN2C full-length ORF (AAH59384.1, 1 a.a. - 171 a.a.) recombinant protein with GST-tag at N-terminal.
Species	Human
Source	Wheat Germ
Description	N-methyl-D-aspartate (NMDA) receptors are a class of ionotropic glutamate receptors. NMDA channel has been shown to be involved in long-term potentiation, an activity-dependent increase in the efficiency of synaptic transmission thought to underlie certain kinds of memory and learning. NMDA receptor channels are heteromers composed of the key receptor subunit NMDAR1 (GRIN1) and 1 or more of the 4 NMDAR2 subunits: NMDAR2A (GRIN2A), NMDAR2B (GRIN2B), NMDAR2C (GRIN2C), and NMDAR2D (GRIN2D).
Molecular Mass	44 kDa
AA Sequence	MGGALGPALLLTSFLGAWAGLGPQGGEQGMTVAVVFSSSGPPQAQFRARLTPQSF LDLPLEIQPLTVGVNTTNPSSLLTQICGLLGAAHVHGIVFEDNVDTEAVAQILDFISSQ THVPILSISGGSAVVLTPKVHVQTHVPSCLRPGTRLGSGVLWFWEAGIRRDGQGGG G
Applications	Enzyme-linked Immunoabsorbent Assay Western Blot (Recombinant protein) Antibody Production

 Tel: 1-631-559-9269 1-516-512-3133

 Email: info@creative-biomart.com  Fax: 1-631-938-8127

 45-1 Ramsey Road, Shirley, NY 11967, USA

Protein Array

Notes	Best use within three months from the date of receipt of this protein.
Storage	Store at -80 centigrade. Aliquot to avoid repeated freezing and thawing.
Storage Buffer	50 mM Tris-HCl, 10 mM reduced Glutathione, pH=8.0 in the elution buffer.

GENE INFORMATION

Gene Name	GRIN2C glutamate receptor, ionotropic, N-methyl D-aspartate 2C [Homo sapiens]
Official Symbol	GRIN2C
Synonyms	GRIN2C; glutamate receptor, ionotropic, N-methyl D-aspartate 2C; NMDAR2C; glutamate [NMDA] receptor subunit epsilon-3; GluN2C; N-methyl D-aspartate receptor subtype 2C; N-methyl-D-aspartate receptor subunit 2C; NR2C;
Gene ID	2905
mRNA Refseq	NM_000835
Protein Refseq	NP_000826
MIM	138254
UniProt ID	Q14957

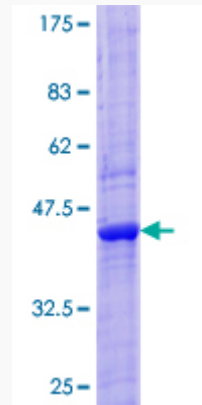
 Tel: 1-631-559-9269 1-516-512-3133

 Email: info@creative-biomart.com  Fax: 1-631-938-8127

 45-1 Ramsey Road, Shirley, NY 11967, USA



Quality Control
Testing



12.5% SDS-PAGE Stained with Coomassie Blue.

Tel: 1-631-559-9269 1-516-512-3133

Email: info@creative-biomart.com Fax: 1-631-938-8127

45-1 Ramsey Road, Shirley, NY 11967, USA