

## Recombinant Human GRIN3B protein, His-tagged

Cat. No. GRIN3B-7895H Lot. No. (See product label)

### SPECIFICATION

<b>Product Overview</b>	Recombinant Human GRIN3B protein(100-300 aa), fused with N-terminal His tag, was expressed in E.coli.
<b>Species</b>	Human
<b>Source</b>	E.coli
<b>ProteinLength</b>	100-300 aa
<b>Form</b>	The purified protein was lyophilized from sterile phosphate-buffered saline (PBS: 58 mM Na <sub>2</sub> HPO <sub>4</sub> , 17 mM NaH <sub>2</sub> PO <sub>4</sub> , 68 mM NaCl, pH 7.4). Prior to lyophilization, 5% (w/v) trehalose and 5% (w/v) mannitol were incorporated as cryoprotective excipients.
<b>AASequence</b>	VAALLAFPEARPELLQLHFLAAATETPVLSLLRREARAPLGAPNPFHLQLHWASPLET LLDVLVAVLQAHAWEDVGLALCRTCQDPGGLVALWTSRAGRPPQLVLDLSRRDGTG AGLRARLAPMAAPVGGGEAPVPAAVLLGCDIARARRVLEAVPPGPHWLLGTPLPPKA LPTAGLPPGLLALGEVARPPLEAAIHDIVQLV
<b>Storage</b>	Store at 2-8°C for 1-2 weeks. Aliquot and store at -20°C to -80°C for up to 3 months, reconstitution with sterile water and addition of an equal volume of glycerol. Avoid repeat freeze-thaw cycles.
<b>Reconstitution</b>	Dissolve the product in 200 µl sterile water to achieve a working concentration of 0.25 g/

 Tel: 1-631-559-9269 1-516-512-3133

 Email: [info@creative-biomart.com](mailto:info@creative-biomart.com)  Fax: 1-631-938-8127

 45-1 Ramsey Road, Shirley, NY 11967, USA

μl. If experimental compatibility allows, mix the aqueous solution with an equal volume of glycerol (1:1 ratio) after initial reconstitution.

## GENE INFORMATION

<b>Gene Name</b>	GRIN3B glutamate receptor, ionotropic, N-methyl-D-aspartate 3B [ Homo sapiens ]
<b>Official Symbol</b>	GRIN3B
<b>Synonyms</b>	GRIN3B; glutamate receptor, ionotropic, N-methyl-D-aspartate 3B; glutamate [NMDA] receptor subunit 3B; GluN3B; NMDAR3B; NMDA receptor subunit 3B; N-methyl-D-aspartate receptor subtype 3B; NMDA type glutamate receptor subunit NR3B; NR3B;
<b>Gene ID</b>	116444
<b>mRNA Refseq</b>	NM_138690
<b>Protein Refseq</b>	NP_619635
<b>MIM</b>	606651
<b>UniProt ID</b>	O60391

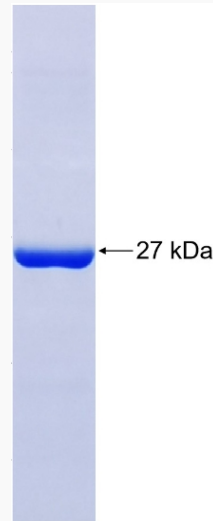
 Tel: 1-631-559-9269 1-516-512-3133

 Email: [info@creative-biomart.com](mailto:info@creative-biomart.com)  Fax: 1-631-938-8127

 45-1 Ramsey Road, Shirley, NY 11967, USA



SDS-PAGE



Tel: 1-631-559-9269 1-516-512-3133

Email: [info@creative-biomart.com](mailto:info@creative-biomart.com) Fax: 1-631-938-8127

45-1 Ramsey Road, Shirley, NY 11967, USA