

## Recombinant Human GRIP1 Protein, GST-tagged

**Cat. No.** GRIP1-12H    **Lot. No.** (See product label)

### SPECIFICATION

<b>Product Overview</b>	Recombinant Human GRIP1(851 a.a. - 950 a.a.) fused with GST tag at N-terminal was expressed in Wheat Germ.
<b>Species</b>	Human
<b>Source</b>	Wheat Germ
<b>ProteinLength</b>	851 a.a. - 950 a.a.
<b>Description</b>	This gene encodes a member of the glutamate receptor interacting protein family. The encoded scaffold protein binds to and mediates the trafficking and membrane organization of a number of transmembrane proteins. Alternatively spliced transcript variants encoding different isoforms have been described.
<b>Form</b>	50 mM Tris-HCl, 10 mM reduced Glutathione, pH=8.0 in the elution buffer.
<b>Molecular Mass</b>	36.74 kDa
<b>AA Sequence</b>	QSGILRELEATIMSGSTMSLNHEAPTPRSQLGRQASFQERSSSRPHYSQTTRSNTL PSDVGRKSVTLRKMKEIKEIMSPVPELVHKVTLYKDSDMEDFG
<b>Applications</b>	Enzyme-linked Immunoabsorbent Assay; Western Blot (Recombinant protein); Antibody Production; Protein Array
<b>Notes</b>	Best use within three months from the date of receipt of this protein.

 Tel: 1-631-559-9269    1-516-512-3133

 Email: [info@creative-biomart.com](mailto:info@creative-biomart.com)     Fax: 1-631-938-8127

 45-1 Ramsey Road, Shirley, NY 11967, USA

**Storage** Store at -80 centigrade. Aliquot to avoid repeated freezing and thawing.

## GENE INFORMATION

**Gene Name** GRIP1 glutamate receptor interacting protein 1 [ Homo sapiens ]

**Official Symbol** GRIP1

**Synonyms** GRIP1; glutamate receptor interacting protein 1; glutamate receptor-interacting protein 1; GRIP;

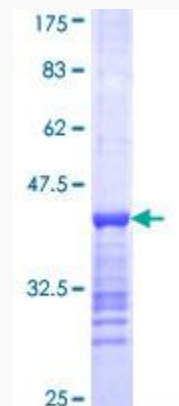
**Gene ID** 23426

**mRNA Refseq** NM\_001178074

**Protein Refseq** NP\_001171545

**MIM** 604597

**UniProt ID** Q9Y3R0



 Tel: 1-631-559-9269 1-516-512-3133

 Email: [info@creative-biomart.com](mailto:info@creative-biomart.com)  Fax: 1-631-938-8127

 45-1 Ramsey Road, Shirley, NY 11967, USA