

Recombinant Human GRK1 Protein, GST-tagged

Cat. No. GRK1-5352H Lot. No. (See product label)

SPECIFICATION

Product Overview	Human GRK1 partial ORF (NP_002920.1, 51 a.a. - 150 a.a.) recombinant protein with GST-tag at N-terminal.
Species	Human
Source	Wheat Germ
Description	This gene encodes a member of the guanine nucleotide-binding protein (G protein)-coupled receptor kinase subfamily of the Ser/Thr protein kinase family. The protein phosphorylates rhodopsin and initiates its deactivation. Defects in GRK1 are known to cause Oguchi disease 2 (also known as stationary night blindness Oguchi type-2). [provided by RefSeq]
Molecular Mass	36.63 kDa
AA Sequence	RDSLSLEFESVCLEQPIGKKLFQQFLQSAEKHLPALWWDIEDYDTADNDLQPQKA QTILAQYLDPQAKLFCSFLDEGIVAKFKEGPVEIQDGLFQPLL
Applications	Enzyme-linked Immunoabsorbent Assay Western Blot (Recombinant protein) Antibody Production Protein Array
Notes	Best use within three months from the date of receipt of this protein.

 Tel: 1-631-559-9269 1-516-512-3133

 Email: info@creative-biomart.com  Fax: 1-631-938-8127

 45-1 Ramsey Road, Shirley, NY 11967, USA

Storage Store at -80 centigrade. Aliquot to avoid repeated freezing and thawing.

Storage Buffer 50 mM Tris-HCl, 10 mM reduced Glutathione, pH=8.0 in the elution buffer.

GENE INFORMATION

Gene Name GRK1 G protein-coupled receptor kinase 1 [Homo sapiens]

Official Symbol GRK1

Synonyms GRK1; G protein-coupled receptor kinase 1; rhodopsin kinase, RHOK; rhodopsin kinase; GPRK1; RK; RHOK;

Gene ID 6011

mRNA Refseq NM_002929

Protein Refseq NP_002920

MIM 180381

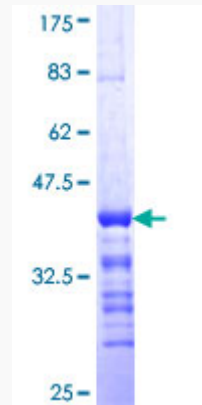
UniProt ID Q15835

 Tel: 1-631-559-9269 1-516-512-3133

 Email: info@creative-biomart.com  Fax: 1-631-938-8127

 45-1 Ramsey Road, Shirley, NY 11967, USA

**Quality Control
Testing**



12.5% SDS-PAGE Stained with Coomassie Blue.

 Tel: 1-631-559-9269 1-516-512-3133

 Email: info@creative-biomart.com  Fax: 1-631-938-8127

 45-1 Ramsey Road, Shirley, NY 11967, USA