

Recombinant Human GRK5 Protein, GST-tagged

Cat. No. GRK5-5356H Lot. No. (See product label)

SPECIFICATION

Product Overview	Human GRK5 partial ORF (AAH64506, 51 a.a. - 150 a.a.) recombinant protein with GST-tag at N-terminal.
Species	Human
Source	Wheat Germ
Description	This gene encodes a member of the guanine nucleotide-binding protein (G protein)-coupled receptor kinase subfamily of the Ser/Thr protein kinase family. The protein phosphorylates the activated forms of G protein-coupled receptors thus initiating their deactivation. It has also been shown to play a role in regulating the motility of polymorphonuclear leukocytes (PMNs). [provided by RefSeq]
Molecular Mass	36.63 kDa
AA Sequence	RDYCSLCDKQPIGRLLFRQFCETRPGLECYIQFLDSVAEYEVTPDEKLGKEGKEIMT KYLTPKSPVFIAQVGQDLVSQTEEKLLQKPKELFSACAQSVH
Applications	Enzyme-linked Immunoabsorbent Assay Western Blot (Recombinant protein) Antibody Production Protein Array
Notes	Best use within three months from the date of receipt of this protein.

 Tel: 1-631-559-9269 1-516-512-3133

 Email: info@creative-biomart.com  Fax: 1-631-938-8127

 45-1 Ramsey Road, Shirley, NY 11967, USA

Storage Store at -80 centigrade. Aliquot to avoid repeated freezing and thawing.

Storage Buffer 50 mM Tris-HCl, 10 mM reduced Glutathione, pH=8.0 in the elution buffer.

GENE INFORMATION

Gene Name GRK5 G protein-coupled receptor kinase 5 [Homo sapiens]

Official Symbol GRK5

Synonyms GRK5; G protein-coupled receptor kinase 5; GPRK5; FP2025; g protein-coupled receptor kinase GRK5; FLJ39780;

Gene ID 2869

mRNA Refseq NM_005308

Protein Refseq NP_005299

MIM 600870

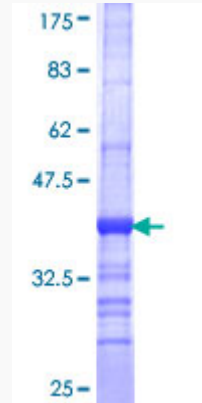
UniProt ID P34947

 Tel: 1-631-559-9269 1-516-512-3133

 Email: info@creative-biomart.com  Fax: 1-631-938-8127

 45-1 Ramsey Road, Shirley, NY 11967, USA

**Quality Control
Testing**



12.5% SDS-PAGE Stained with Coomassie Blue.

 Tel: 1-631-559-9269 1-516-512-3133

 Email: info@creative-biomart.com  Fax: 1-631-938-8127

 45-1 Ramsey Road, Shirley, NY 11967, USA