

## Recombinant Human GRK5 protein, His-tagged

Cat. No. GRK5-760H Lot. No. (See product label)

### SPECIFICATION

<b>Product Overview</b>	Recombinant Human GRK5 protein(NP_005299.1) (Met 1-Ser 590) was expressed in Insect Cells, fused with a polyhistidine tag at the C-terminus.
<b>Species</b>	Human
<b>Source</b>	Insect Cells
<b>ProteinLength</b>	1-590 aa
<b>Form</b>	Lyophilized from sterile 50mM Tris, 100mM NaCl, 0.5mM PMSF, 1mM DTT, 0.5mM EDTA, 10% gly, pH 7.4.
<b>Molecular Mass</b>	The recombinant human GRK5 consists of 600 amino acids and predicts a molecular mass of 69 kDa. The apparent molecular mass of rhGRK5 is approximately 58 kDa in SDS-PAGE under reducing conditions.
<b>Endotoxin</b>	< 1.0 EU per µg of the protein as determined by the LAL method.
<b>Purity</b>	> 90 % as determined by SDS-PAGE
<b>Storage</b>	Store it under sterile conditions at -20°C to -80°C upon receiving. Recommend to aliquot the protein into smaller quantities for optimal storage. Avoid repeated freeze-thaw cycles.
<b>Reconstitution</b>	It is recommended that sterile water be added to the vial to prepare a stock solution of

 Tel: 1-631-559-9269 1-516-512-3133

 Email: [info@creative-biomart.com](mailto:info@creative-biomart.com)  Fax: 1-631-938-8127

 45-1 Ramsey Road, Shirley, NY 11967, USA



0.2 ug/ul. Centrifuge the vial at 4°C before opening to recover the entire contents.

## GENE INFORMATION

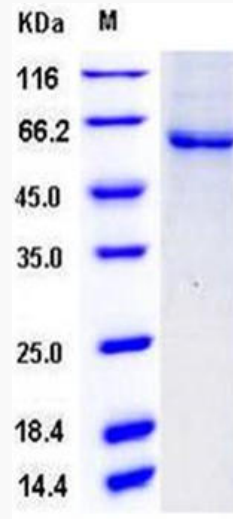
<b>Gene Name</b>	GRK5 G protein-coupled receptor kinase 5 [ Homo sapiens ]
<b>Official Symbol</b>	GRK5
<b>Synonyms</b>	GRK5; G protein-coupled receptor kinase 5; GPRK5; FP2025; g protein-coupled receptor kinase GRK5; FLJ39780;
<b>Gene ID</b>	2869
<b>mRNA Refseq</b>	NM_005308
<b>Protein Refseq</b>	NP_005299
<b>MIM</b>	600870
<b>UniProt ID</b>	P34947

 Tel: 1-631-559-9269 1-516-512-3133

 Email: [info@creative-biomart.com](mailto:info@creative-biomart.com)  Fax: 1-631-938-8127

 45-1 Ramsey Road, Shirley, NY 11967, USA

SDS-PAGE



 Tel: 1-631-559-9269 1-516-512-3133

 Email: [info@creative-biomart.com](mailto:info@creative-biomart.com)  Fax: 1-631-938-8127

 45-1 Ramsey Road, Shirley, NY 11967, USA