

Recombinant Human GRK7 Protein, MYC/DDK-tagged, C13 and N15-labeled

Cat. No. GRK7-147H Lot. No. (See product label)

SPECIFICATION

Product Overview

GRK7 MS Standard C13 and N15-labeled recombinant protein (NP_631948) with a C-terminal MYC/DDK tag, was expressed in HEK293 cells.

Species

Human

Source

HEK293

Description

This gene encodes a member of the guanine nucleotide-binding protein (G protein)-coupled receptor kinase subfamily of the Ser/Thr protein kinase family. It is specifically expressed in the retina and the encoded protein has been shown to phosphorylate cone opsins and initiate their deactivation.

Molecular Mass

62 kDa

AA Sequence

MVDMGALDNLANTAYLQARKPSDCDSKELQRRRRSLALPGLQGCAELRQKLSLNF
HSLCEQQPIGRRLFRDFLATVPTFRKAATFLEDVQNWELAEEGPTKDSALQGLVATC
ASAPAPGNPQPFLSQAVATKCAATTEEERVAAVTLAKAEAMAFLQEQQPFKDFVTS
AFYDKFLQWKL FEMQPVSDKYFTEFRVLGKGGFGEVCAVQVKNTGKMYACKKLDK
KRLKKKGGEKMALLEKEILEKVSSPFIVSLAYAFESKTHLCLVMSLMNGGDLKFHIYN
VGTRGLDMSRVIFYSAQIACGMLHLHEL GIVYRDMKPENVLLDDLGNCRSLDLGLAV
EMKGGKPITQRAGTNGYMAPEILMEKVSYSYPVDWVFAMGCSIYEMVAGRTPFKDYK
EKVSKEDLKQRTLQDEVKQHDNFTEEAKDICRLFLAKKPEQRLGSREKSDDPRKH
HFFKTINFPRLEAGLIEPPFVPDPSVVYAKDIAEIDDFSEVRGVEFDDKDKQFFKNFAT

 Tel: 1-631-559-9269 1-516-512-3133

 Email: info@creative-biomart.com  Fax: 1-631-938-8127

 45-1 Ramsey Road, Shirley, NY 11967, USA

GAVPIAWQEEIIETGLFEELNDPNRPTGCEEGNSSKSGVCLLLSGPTRTRRLEQKLIS
EEDLAANDILDYKDDDDKV

Purity > 80% as determined by SDS-PAGE and Coomassie blue staining

Stability Stable for 3 months from receipt of products under proper storage and handling conditions.

Storage Store at -80 centigrade. Avoid repeated freeze-thaw cycles.

Concentration 50 µg/mL as determined by BCA

Storage Buffer 100 mM glycine, 25 mM Tris-HCl, pH 7.3.

GENE INFORMATION

Gene Name GRK7 G protein-coupled receptor kinase 7 [Homo sapiens (human)]

Official Symbol GRK7

Synonyms GRK7; G protein-coupled receptor kinase 7; GPRK7; rhodopsin kinase GRK7; g protein-coupled receptor kinase GRK7; EC 2.7.11.14

Gene ID 131890

mRNA Refseq NM_139209

Protein Refseq NP_631948

UniProt ID Q8WTQ7

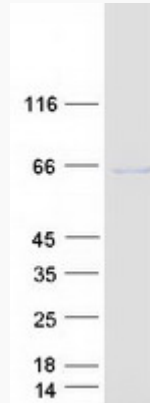
 Tel: 1-631-559-9269 1-516-512-3133

 Email: info@creative-biomart.com  Fax: 1-631-938-8127

 45-1 Ramsey Road, Shirley, NY 11967, USA



SDS-PAGE



Tel: 1-631-559-9269 1-516-512-3133

Email: info@creative-biomart.com Fax: 1-631-938-8127

45-1 Ramsey Road, Shirley, NY 11967, USA