

Active Recombinant Human GRK7 Protein, GST-tagged

Cat. No. GRK7-5360H Lot. No. (See product label)

SPECIFICATION

Product Overview	Human GRK7 (NP_631948.1, 1 a.a. - 553 a.a.) full-length recombinant protein with GST tag expressed in baculovirus infected Sf21 cells.
Species	Human
Source	Insect Cells
Description	This gene encodes a member of the guanine nucleotide-binding protein (G protein)-coupled receptor kinase subfamily of the Ser/Thr protein kinase family. It is specifically expressed in the retina and the encoded protein has been shown to phosphorylate cone opsins and initiate their deactivation. [provided by RefSeq]
Form	Liquid
Bio-activity	The activity was measured by off-chip mobility shift assay. The enzyme was incubated with fluorescence-labeled substrate and Mg(or Mn)/ATP. The phosphorylated and unphosphorylated substrates were separated and detected by LabChip 3000. Substrate: Modified PLKtide. ATP: 100 μM.
Molecular Mass	89 kDa
Purity	97 % by SDS-PAGE/CBB staining

 Tel: 1-631-559-9269 1-516-512-3133

 Email: info@creative-biomart.com  Fax: 1-631-938-8127

 45-1 Ramsey Road, Shirley, NY 11967, USA

Applications	Functional Study SDS-PAGE
Storage	Store at -80 centigrade. Aliquot to avoid repeated freezing and thawing.
Storage Buffer	In 50 mM Tris-HCl, 150 mM NaCl, pH 7.5 (0.1% CHAPS, 1 mM DTT, 10% glycerol)

GENE INFORMATION

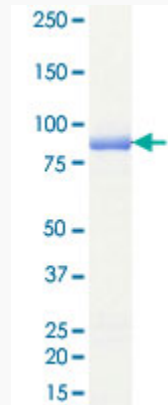
Gene Name	GRK7 G protein-coupled receptor kinase 7 [Homo sapiens]
Official Symbol	GRK7
Synonyms	GRK7; G protein-coupled receptor kinase 7; GPRK7; g protein-coupled receptor kinase GRK7;
Gene ID	131890
mRNA Refseq	NM_139209
Protein Refseq	NP_631948
MIM	606987
UniProt ID	Q8WTQ7

 Tel: 1-631-559-9269 1-516-512-3133

 Email: info@creative-biomart.com  Fax: 1-631-938-8127

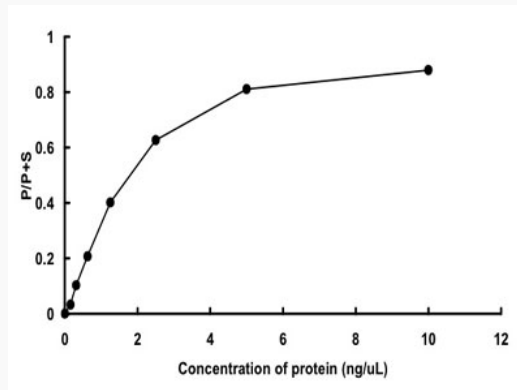
 45-1 Ramsey Road, Shirley, NY 11967, USA

**Quality Control
Testing**



Loading 1 μ g protein in SDS-PAGE

**Result of activity
analysis**



 Tel: 1-631-559-9269 1-516-512-3133

 Email: info@creative-biomart.com  Fax: 1-631-938-8127

 45-1 Ramsey Road, Shirley, NY 11967, USA