

Recombinant Human GRK7 Protein, GST-tagged

Cat. No. GRK7-5361H Lot. No. (See product label)

SPECIFICATION

Product Overview Human GRK7 full-length ORF (AAI52978.1, 1 a.a. - 553 a.a.) recombinant protein with GST-tag at N-terminal.

Species Human

Source Wheat Germ

Description This gene encodes a member of the guanine nucleotide-binding protein (G protein)-coupled receptor kinase subfamily of the Ser/Thr protein kinase family. It is specifically expressed in the retina and the encoded protein has been shown to phosphorylate cone opsins and initiate their deactivation. [provided by RefSeq]

Molecular Mass 87.78 kDa

AA Sequence

```
MVDMGALDNLANTAYLQARKPSDCDSKELQRRRRSLALPGLQGCAELRQKLSLNF
HSLCEQQPIGRRLFRDFLATVPTFRKAATFLEDVQNWELAEEGPTKDSALQGLVATC
ASAPAPGNPQPFLSQAVATKCAATTEEERVAAVTLAKAEAMAFLQEQQPFKDFVTS
AFYDKFLQWKL FEMQPVSDKYFTEFRVLGKGGFGEVCAVQVKNTGKMYACKKLDK
KRLKKKGGEKMALLEKEILEKVSSPFIVSLAYAFESKTHLCLVMSLMNGGDLKFHIYN
VGTRGLDMSRVIFYSAQIACGMLHLHEL GIVYRDMKPENVLLDDLGNCRSLDLGLAV
EMKGGKPITQRAGTNGYMAPEILMEKVSYSYPVDWVFAMGCSIYEMVAGRTPFKDYK
EKVSKEDLKQRTLQDEVKQHDNFTEEAKDICRLFLAKKPEQRLGSREKSDDPRKH
HFFKTINFPRLEAGLIEPPFVPDPSVVYAKDIAEIDDFSEVRGVEFDDKDKQFFKNFAT
GAVPIAWQEEIITGLFEELNDPNRPTGCEEENSSKSGVCLLL
```

 Tel: 1-631-559-9269 1-516-512-3133

 Email: info@creative-biomart.com  Fax: 1-631-938-8127

 45-1 Ramsey Road, Shirley, NY 11967, USA

Applications	Enzyme-linked Immunoabsorbent Assay Western Blot (Recombinant protein) Antibody Production Protein Array
Notes	Best use within three months from the date of receipt of this protein.
Storage	Store at -80 centigrade. Aliquot to avoid repeated freezing and thawing.
Storage Buffer	50 mM Tris-HCl, 10 mM reduced Glutathione, pH=8.0 in the elution buffer.

GENE INFORMATION

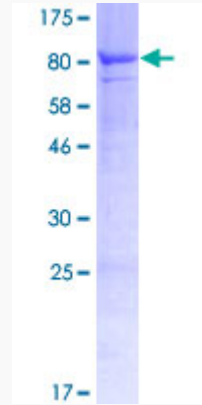
Gene Name	GRK7 G protein-coupled receptor kinase 7 [Homo sapiens]
Official Symbol	GRK7
Synonyms	GRK7; G protein-coupled receptor kinase 7; GPRK7; g protein-coupled receptor kinase GRK7;
Gene ID	131890
mRNA Refseq	NM_139209
Protein Refseq	NP_631948
MIM	606987
UniProt ID	Q8WTQ7

 Tel: 1-631-559-9269 1-516-512-3133

 Email: info@creative-biomart.com  Fax: 1-631-938-8127

 45-1 Ramsey Road, Shirley, NY 11967, USA

**Quality Control
Testing**



12.5% SDS-PAGE Stained with Coomassie Blue.

 Tel: 1-631-559-9269 1-516-512-3133

 Email: info@creative-biomart.com  Fax: 1-631-938-8127

 45-1 Ramsey Road, Shirley, NY 11967, USA