

Recombinant Human GRM1 Protein (Ser165-Glu592), N-His tagged

Cat. No. GRM1-2548H **Lot. No.** (See product label)

SPECIFICATION

Product Overview	Recombinant human GRM1 (Ser165-Glu592) protein fused with the N-His tag was expressed in E. coli.
Species	Human
Source	E.coli
ProteinLength	Ser165-Glu592
Molecular Mass	50.95 kDa
Purity	>90 % as determined by SDS-PAGE.
Notes	For research use only.
Storage	Use a manual defrost freezer and avoid repeated freeze thaw cycles. Store at 2 to 8 centigrade for one week. Store at -20 to -80 centigrade for twelve months from the date of receipt.
Storage Buffer	0.01M PBS, pH 7.4, 0.02 % NLS
Reconstitution	Reconstitute in sterile water for a stock solution.
Shipping	In general, proteins are provided as lyophilized powder/frozen liquid. They are

 Tel: 1-631-559-9269 1-516-512-3133

 Email: info@creative-biomart.com  Fax: 1-631-938-8127

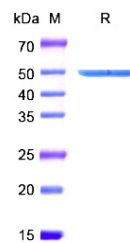
 45-1 Ramsey Road, Shirley, NY 11967, USA

shipped out with dry ice/blue ice unless customers require otherwise.

GENE INFORMATION

Gene Name	GRM1 glutamate receptor, metabotropic 1 [Homo sapiens (human)]
Official Symbol	GRM1
Synonyms	GRM1; glutamate receptor, metabotropic 1; metabotropic glutamate receptor 1; GPRC1A; mGlu1; MGLUR1; GRM1A; MGLUR1A;
Gene ID	2911
mRNA Refseq	NM_000838
Protein Refseq	NP_000829
MIM	604473
UniProt ID	Q13255

SDS-PAGE



Tel: 1-631-559-9269 1-516-512-3133

Email: info@creative-biomart.com Fax: 1-631-938-8127

45-1 Ramsey Road, Shirley, NY 11967, USA