

Recombinant Human GRM6 Protein, GST-tagged

Cat. No. GRM6-5369H **Lot. No.** (See product label)

SPECIFICATION

Product Overview	Human GRM6 partial ORF (NP_000834, 477 a.a. - 566 a.a.) recombinant protein with GST-tag at N-terminal.
Species	Human
Source	Wheat Germ
Description	L-glutamate is the major excitatory neurotransmitter in the central nervous system and activates both ionotropic and metabotropic glutamate receptors. Glutamatergic neurotransmission is involved in most aspects of normal brain function and can be perturbed in many neuropathologic conditions. The metabotropic glutamate receptors are a family of G protein-coupled receptors, that have been divided into 3 groups on the basis of sequence homology, putative signal transduction mechanisms, and pharmacologic properties. Group I includes GRM1 and GRM5 and these receptors have been shown to activate phospholipase C. Group II includes GRM2 and GRM3 while Group III includes GRM4, GRM6, GRM7 and GRM8. Group II and III receptors are linked to the inhibition of the cyclic AMP cascade but differ in their agonist selectivities. [provided by RefSeq]
Molecular Mass	35.64 kDa
AA Sequence	ATNGSASSGGYQAVGQWAETLRDLVEALQWSGDPHEVPSSLCSLPCGPGERKKM VKGVPCCWHCEACDGYRFQVDEFTCEACPGDMRPTP
Applications	Enzyme-linked Immunoabsorbent Assay

 Tel: 1-631-559-9269 1-516-512-3133

 Email: info@creative-biomart.com  Fax: 1-631-938-8127

 45-1 Ramsey Road, Shirley, NY 11967, USA

Western Blot (Recombinant protein)
 Antibody Production
 Protein Array

Notes	Best use within three months from the date of receipt of this protein.
Storage	Store at -80 centigrade. Aliquot to avoid repeated freezing and thawing.
Storage Buffer	50 mM Tris-HCl, 10 mM reduced Glutathione, pH=8.0 in the elution buffer.

GENE INFORMATION

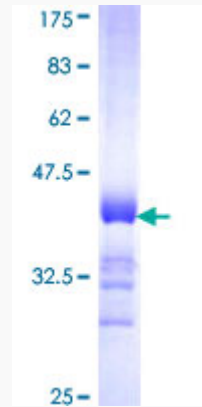
Gene Name	GRM6 glutamate receptor, metabotropic 6 [Homo sapiens]
Official Symbol	GRM6
Synonyms	GRM6; glutamate receptor, metabotropic 6; metabotropic glutamate receptor 6; GPRC1F; mGlu6; MGLUR6; CSNB1B; DKFZp686H1993;
Gene ID	2916
mRNA Refseq	NM_000843
Protein Refseq	NP_000834
MIM	604096
UniProt ID	O15303

 Tel: 1-631-559-9269 1-516-512-3133

 Email: info@creative-biomart.com  Fax: 1-631-938-8127

 45-1 Ramsey Road, Shirley, NY 11967, USA

**Quality Control
Testing**



12.5% SDS-PAGE Stained with Coomassie Blue.

 Tel: 1-631-559-9269 1-516-512-3133

 Email: info@creative-biomart.com  Fax: 1-631-938-8127

 45-1 Ramsey Road, Shirley, NY 11967, USA