

# Recombinant Human GRN Protein, MYC/DDK-tagged, C13 and N15-labeled

**Cat. No.** GRN-041H    **Lot. No.** (See product label)

## SPECIFICATION

<b>Product Overview</b>	GRN MS Standard C13 and N15-labeled recombinant protein (NP_002078) with a C-terminal MYC/DDK tag, was expressed in HEK293 cells.
<b>Species</b>	Human
<b>Source</b>	HEK293
<b>Description</b>	<p>Granulins are a family of secreted, glycosylated peptides that are cleaved from a single precursor protein with 7.5 repeats of a highly conserved 12-cysteine granulin/epithelin motif. The 88 kDa precursor protein, progranulin, is also called proepithelin and PC cell-derived growth factor. Cleavage of the signal peptide produces mature granulin which can be further cleaved into a variety of active, 6 kDa peptides. These smaller cleavage products are named granulin A, granulin B, granulin C, etc. Epithelins 1 and 2 are synonymous with granulins A and B, respectively. Both the peptides and intact granulin protein regulate cell growth. However, different members of the granulin protein family may act as inhibitors, stimulators, or have dual actions on cell growth. Granulin family members are important in normal development, wound healing, and tumorigenesis.</p>
<b>Molecular Mass</b>	63.5 kDa
<b>AA Sequence</b>	MWTLVSWVALTAGLVAGTRCPDGQFCPVACCLDPGGASYSCCRPLLDKWPTLSR HLGGPCQVDAHCSAGHSCIFTVSGTSSCCPFPEAVACGDGHHCCPRGFHCSADGR

 Tel: 1-631-559-9269    1-516-512-3133

 Email: [info@creative-biomart.com](mailto:info@creative-biomart.com)     Fax: 1-631-938-8127

 45-1 Ramsey Road, Shirley, NY 11967, USA

SCFQRSGNNSVGAIQCPDSQFECPDFSTCCVMVDGSWGCCPMPQASCCEDRVHC  
 CPHGAFCDLVHTRCITPTGTHPLAKKLPARTNRAVALSSVMCPDARSRCPDGST  
 CCELPSGKYGCCPMPNATCCSDHLHCCPQDTVCDLIQSKCLSKENATDLLTKLPA  
 HTVGDVKCDMEVSCPDGYTCCRLQSGAWGCCPFTQAVCCEDHIHCCPAGFTCDT  
 QKGTCEQGP HQVPWMEKAPAHLSLPDPQALKRDVPCDNVSSCPSSDTCCQLTSG  
 EWGCCPIPEAVCCSDHQHCCPQGYTCVAEGQCQRGSEIVAGLEKMPARRASLSHP  
 RDIGCDQHTSCPVGQTCCPSLGGSWACCQLPHAVCCEDRQHCCPAGYTCNVKAR  
 SCEKEVSAQPATFLARSPHVGVKDVCEGEGHFCHDNQTCCRDNRQGWACCPYR  
 QGVCCADRRHCCPAGFRCAARGTKCLRREAPRWDAPLRDPALRQLLTRTRPLEQK  
 LISEEDLAANDILDYKDDDDKV

**Purity** > 80% as determined by SDS-PAGE and Coomassie blue staining

**Stability** Stable for 3 months from receipt of products under proper storage and handling conditions.

**Storage** Store at -80 centigrade. Avoid repeated freeze-thaw cycles.

**Concentration** 50 µg/mL as determined by BCA

**Storage Buffer** 100 mM glycine, 25 mM Tris-HCl, pH 7.3.

## GENE INFORMATION

**Gene Name** GRN granulin precursor [ Homo sapiens (human) ]

**Official Symbol** GRN

**Synonyms** GRN; granulin precursor; CLN11; GEP; GP88; PCDGF; PEPI; PGRN; progranulin; PC cell-derived growth factor; acrogranin; epithelin; glycoprotein 88; glycoprotein of 88 Kda; granulin-epithelin; granulins; proepithelin;

 Tel: 1-631-559-9269 1-516-512-3133

 Email: [info@creative-biomart.com](mailto:info@creative-biomart.com)  Fax: 1-631-938-8127

 45-1 Ramsey Road, Shirley, NY 11967, USA

Gene ID 2896

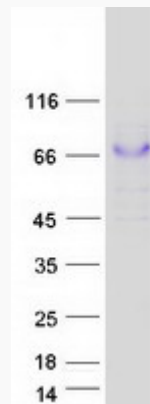
mRNA Refseq NM\_002087

Protein Refseq NP\_002078

MIM 138945

UniProt ID P28799

SDS-PAGE



Tel: 1-631-559-9269 1-516-512-3133

Email: [info@creative-biomart.com](mailto:info@creative-biomart.com) Fax: 1-631-938-8127

45-1 Ramsey Road, Shirley, NY 11967, USA