

Recombinant Shigella Dysenteriae Serotype 1 GROL Protein (101-548 aa), His-SUMO-Myc-tagged

Cat. No. GROL-2168S Lot. No. (See product label)

SPECIFICATION

Product Overview	Recombinant Shigella Dysenteriae Serotype 1 (strain Sd197) GROL Protein (101-548 aa) is produced by E. coli expression system. This protein is fused with a 10xHis-SUMO tag at the N-terminal and a Myc tag at the C-terminal. Research Area: Microbiology. Protein Description: Partial.
Species	Shigella Dysenteriae Serotype 1
Source	E.coli
ProteinLength	101-548 aa
Description	Prevents misfolding and promotes the refolding and proper assembly of unfolded polypeptides generated under stress conditions.
Form	Tris-based buffer,50% glycerol
Molecular Mass	66.9 kDa
AA Sequence	TEGLKAVAAGMNPMDLKRIGDKAVTAAVEELKALSVPCSDSKAIAQVGTISANSDET VGKLI AEAMDKV GKEGVITVEDGTGLQDEL DVVEGMQFDRGYLSPYFINKPETGAVE LESPFILLADKKISNIREMLPVLEAVAKAGKPLLI AEDVEGEALATLVVNTMRGIVKVA AVKAPGFGDRRKAMLQDIATLTGGTVISEEIGMELEKATLEDLGQAKRVVINKDTTII DVGVEEAAIQGRVAQIRQQIEEATSDYDREKLQERVAKLGGVAVIKVGAATEVEMK EKKARVEDALHATRAAVEEGVVAGGGVALIRVASKLADLRGQNE DQNVGIKVALRA

 Tel: 1-631-559-9269 1-516-512-3133

 Email: info@creative-biomart.com  Fax: 1-631-938-8127

 45-1 Ramsey Road, Shirley, NY 11967, USA

MEAPLRQIVLNCGEEPSVVANTVKGGDGNYGYNAAATEEYGNMIDMGILDPTKVTRS
ALQYAASVAGLMITTECMVTDLPKNDAADLGAAGGMGGMGGMGGMM

Purity > 90% as determined by SDS-PAGE.

Notes Repeated freezing and thawing is not recommended. Store working aliquots at 4 centigrade for up to one week.

Storage The shelf life is related to many factors, storage state, buffer ingredients, storage temperature and the stability of the protein itself. Generally, the shelf life of liquid form is 6 months at -20 centigrade/-80 centigrade. The shelf life of lyophilized form is 12 months at -20 centigrade/-80 centigrade.

Concentration A hardcopy of COA with reconstitution instruction is sent along with the products.

GENE INFORMATION

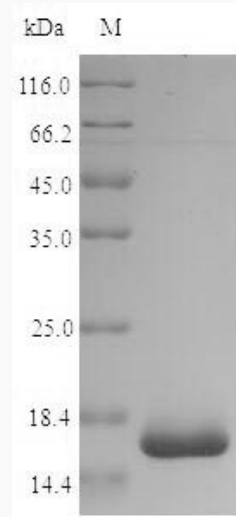
Synonyms groL; GroEL protein; Protein Cpn60;

UniProt ID [Q328C4](https://www.uniprot.org/entry/Q328C4)

 Tel: 1-631-559-9269 1-516-512-3133

 Email: info@creative-biomart.com  Fax: 1-631-938-8127

 45-1 Ramsey Road, Shirley, NY 11967, USA



(Tris-Glycine gel) Discontinuous SDS-PAGE (reduced) with 5% enrichment gel and 15% separation gel.

 Tel: 1-631-559-9269 1-516-512-3133

 Email: info@creative-biomart.com  Fax: 1-631-938-8127

 45-1 Ramsey Road, Shirley, NY 11967, USA