

# Recombinant Human GRP Protein, Myc/DDK-tagged, C13 and N15-labeled

Cat. No. GRP-916H Lot. No. (See product label)

## SPECIFICATION

<b>Product Overview</b>	GRP MS Standard C13 and N15-labeled recombinant protein (NP_001012531) with a C-terminal MYC/DDK tag, was expressed in HEK293 cells.
<b>Species</b>	Human
<b>Source</b>	HEK293
<b>Description</b>	<p>This gene encodes a member of the bombesin-like family of gastrin-releasing peptides. The encoded preproprotein is proteolytically processed to generate two peptides, gastrin-releasing peptide and neuromedin-C. These peptides regulate numerous functions of the gastrointestinal and central nervous systems, including release of gastrointestinal hormones, smooth muscle cell contraction, and epithelial cell proliferation. These peptides are also likely to play a role in human cancers of the lung, colon, stomach, pancreas, breast, and prostate. Alternative splicing results in multiple transcript variants, at least one of which encodes a preproprotein that is proteolytically processed.</p>
<b>Molecular Mass</b>	15.18 kDa
<b>AA Sequence</b>	MRGRELPLVLLALVLCLAPRGRAVPLPAGGGTVLTKMYPRGNHWAVGHLMGKKST GESSVSERGLKQQLREYIRWEEAARNLLGLIEAKENRNHQPPQP KALGNQQPS WDSSESSNFKDLVDSLLQVLNVKEGTPSTRTRPLEQKLISEEDLAANDILDYKDDDD KV

 Tel: 1-631-559-9269 1-516-512-3133

 Email: [info@creative-biomart.com](mailto:info@creative-biomart.com)  Fax: 1-631-938-8127

 45-1 Ramsey Road, Shirley, NY 11967, USA

<b>Purity</b>	> 80% as determined by SDS-PAGE and Coomassie blue staining
<b>Stability</b>	Stable for 3 months from receipt of products under proper storage and handling conditions.
<b>Storage</b>	Store at -80 centigrade. Avoid repeated freeze-thaw cycles.
<b>Concentration</b>	50 µg/mL as determined by BCA
<b>Storage Buffer</b>	100 mM glycine, 25 mM Tris-HCl, pH 7.3.

## GENE INFORMATION

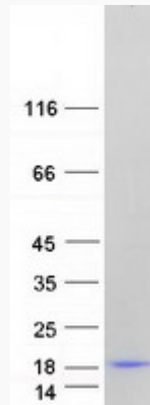
<b>Gene Name</b>	GRP gastrin-releasing peptide [ Homo sapiens (human) ]
<b>Official Symbol</b>	GRP
<b>Synonyms</b>	GRP; gastrin-releasing peptide; bombesin; neuromedin C; pre-progastrin releasing peptide; BN; GRP-10; proGRP; preproGRP;
<b>Gene ID</b>	2922
<b>mRNA Refseq</b>	NM_001012513
<b>Protein Refseq</b>	NP_001012531
<b>MIM</b>	137260
<b>UniProt ID</b>	P07492

 Tel: 1-631-559-9269 1-516-512-3133

 Email: [info@creative-biomart.com](mailto:info@creative-biomart.com)  Fax: 1-631-938-8127

 45-1 Ramsey Road, Shirley, NY 11967, USA

**SDS-PAGE**



 Tel: 1-631-559-9269 1-516-512-3133

 Email: [info@creative-biomart.com](mailto:info@creative-biomart.com)  Fax: 1-631-938-8127

 45-1 Ramsey Road, Shirley, NY 11967, USA