

Recombinant Human GRPEL1 Protein, GST-tagged

Cat. No. GRPEL1-5380H Lot. No. (See product label)

SPECIFICATION

Product Overview	Human GRPEL1 full-length ORF (NP_079472.1, 1 a.a. - 217 a.a.) recombinant protein with GST-tag at N-terminal.
Species	Human
Source	Wheat Germ
Description	GRPEL1 (GrpE Like 1, Mitochondrial) is a Protein Coding gene. Diseases associated with GRPEL1 include Human Monocytic Ehrlichiosis and Ehrlichiosis. Among its related pathways are Metabolism of proteins and Mitochondrial protein import. GO annotations related to this gene include protein homodimerization activity and chaperone binding. An important paralog of this gene is GRPEL2.
Molecular Mass	50.7 kDa
AA Sequence	MAAQCVRLLARRSLPALALSLRPSRLLCTATKQKNSGQNLEEDMGQSEQKADPPAT EKTLLLEEKVKLEEQLKETVEKYKRALADTENLRQRSQKLVEEAKLYGIQAFCKDLLEV ADVLEKATQCVPKKEIKDDNPHLKNLYEGLVMTEVQIQKVFTKHGLLKLNPVGAKFD PYEHEALFHTPVGKEPGTVALVSKVGYKLHGRTLRPALVGVVKEA
Applications	Enzyme-linked Immunoabsorbent Assay Western Blot (Recombinant protein) Antibody Production Protein Array

 Tel: 1-631-559-9269 1-516-512-3133

 Email: info@creative-biomart.com  Fax: 1-631-938-8127

 45-1 Ramsey Road, Shirley, NY 11967, USA

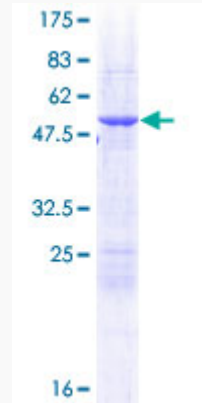
Notes	Best use within three months from the date of receipt of this protein.
Storage	Store at -80 centigrade. Aliquot to avoid repeated freezing and thawing.
Storage Buffer	50 mM Tris-HCl, 10 mM reduced Glutathione, pH=8.0 in the elution buffer.
GENE INFORMATION	
Gene Name	GRPEL1 GrpE-like 1, mitochondrial (E. coli) [Homo sapiens]
Official Symbol	GRPEL1
Synonyms	GRPEL1; GrpE-like 1, mitochondrial (E. coli); grpE protein homolog 1, mitochondrial; FLJ25609; HMGE; mt-GrpE#1; GrpE-like protein cochaperone;
Gene ID	80273
mRNA Refseq	NM_025196
Protein Refseq	NP_079472
MIM	606173
UniProt ID	Q9HAV7

 Tel: 1-631-559-9269 1-516-512-3133

 Email: info@creative-biomart.com  Fax: 1-631-938-8127

 45-1 Ramsey Road, Shirley, NY 11967, USA

**Quality Control
Testing**



12.5% SDS-PAGE Stained with Coomassie Blue.

 Tel: 1-631-559-9269 1-516-512-3133

 Email: info@creative-biomart.com  Fax: 1-631-938-8127

 45-1 Ramsey Road, Shirley, NY 11967, USA