

Recombinant Human GRPEL2 Protein, GST-tagged

Cat. No. GRPEL2-5382H Lot. No. (See product label)

SPECIFICATION

Product Overview	Human GRPEL2 full-length ORF (NP_689620.2, 1 a.a. - 225 a.a.) recombinant protein with GST-tag at N-terminal.
Species	Human
Source	Wheat Germ
Description	GRPEL2 (GrpE Like 2, Mitochondrial) is a Protein Coding gene. Among its related pathways are Metabolism of proteins and Mitochondrial protein import. GO annotations related to this gene include protein homodimerization activity and chaperone binding. An important paralog of this gene is GRPEL1.
Molecular Mass	51.8 kDa
AA Sequence	MAVRSLWAGRLRVQRLLAWSAAWESKGWPLPFSTATQRTAGEDCRSEDPPDELG PPLAERALRVKAVKLEKEVQDLTVRYQRAIADCENIRRRRTQRCVEDAKIFGIQSFCKD LVEVADILEKTTECISEESEPEDQKLTLEKVFRGLLLLEAKLKSVFAKHGLEKLTPIGD KYDPHEHELICHVPAGVGVQPGTVALVRQDGYKLHGRTIRLARVEVAVESQRRL
Applications	Enzyme-linked Immunoabsorbent Assay Western Blot (Recombinant protein) Antibody Production Protein Array
Notes	Best use within three months from the date of receipt of this protein.

 Tel: 1-631-559-9269 1-516-512-3133

 Email: info@creative-biomart.com  Fax: 1-631-938-8127

 45-1 Ramsey Road, Shirley, NY 11967, USA

Storage Store at -80 centigrade. Aliquot to avoid repeated freezing and thawing.

Storage Buffer 50 mM Tris-HCl, 10 mM reduced Glutathione, pH=8.0 in the elution buffer.

GENE INFORMATION

Gene Name GRPEL2 GrpE-like 2, mitochondrial (E. coli) [Homo sapiens]

Official Symbol GRPEL2

Synonyms GRPEL2; GrpE-like 2, mitochondrial (E. coli); grpE protein homolog 2, mitochondrial; DKFZp451C205; FLJ23713; Mt GrpE#2; Mt-GrpE#2; FLJ33918;

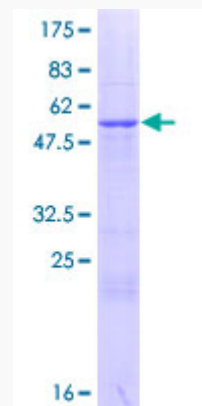
Gene ID 134266

mRNA Refseq NM_152407

Protein Refseq NP_689620

UniProt ID Q8TAA5

Quality Control Testing



 Tel: 1-631-559-9269 1-516-512-3133

 Email: info@creative-biomart.com  Fax: 1-631-938-8127

 45-1 Ramsey Road, Shirley, NY 11967, USA



12.5% SDS-PAGE Stained with Coomassie Blue.

 Tel: 1-631-559-9269 1-516-512-3133

 Email: info@creative-biomart.com  Fax: 1-631-938-8127

 45-1 Ramsey Road, Shirley, NY 11967, USA