

## Recombinant Human GRWD1 Protein, GST-tagged

Cat. No. GRWD1-5386H Lot. No. (See product label)

### SPECIFICATION

<b>Product Overview</b>	Human GRWD1 full-length ORF ( AAH02440.1, 1 a.a. - 446 a.a.) recombinant protein with GST-tag at N-terminal.
<b>Species</b>	Human
<b>Source</b>	Wheat Germ
<b>Description</b>	GRWD1 is a component of the 50S and 80S preribosomal complexes and plays a role in ribosome biogenesis (Gratenstein et al., 2005 [PubMed 15885502]).[supplied by OMIM
<b>Molecular Mass</b>	75.8 kDa
<b>AA Sequence</b>	<p>MAARKGRRRTCETGEPMEAESGDTSSSEGPAQVYLPGRGPPLREGEELVMDEEAY  VLYHRAQTGAPCLSFDIVRDHLGDNRTTELPLTLYLCAGTQAESAQSNRLMMLRMHN  LHGKPPPPSEGSDEEEEEDEEDEEERKPQLELAMVPHYGGINRVRVSWLGEEPV  AGVWSEKQQVEVFALRLLQVVEEPQALAAFLRDEQAQMKPIFSFAGHMGEFAL  DWSPRVTGRLLTGDCQKNIHLWPTDGGSWHVDQRPFVGHTRSVEDLQWSPTEN  TVFASCSADASIRIWDIRAAPSKACMLTTATAHDGDVNVISWSRREPFLSSGGDDGA  LKIWDLRQFKSGSPVATFKQHVAPVTSVEWHPQDSGVFAASGADHQITQWDLAVE  RDPEAGDVEADPGLADLPQQLLFVHQGETELKELHWHPQCPGLLVSTALSGFTIFR  TISV</p>
<b>Applications</b>	Enzyme-linked Immunoabsorbent Assay Western Blot (Recombinant protein)

 Tel: 1-631-559-9269 1-516-512-3133

 Email: [info@creative-biomart.com](mailto:info@creative-biomart.com)  Fax: 1-631-938-8127

 45-1 Ramsey Road, Shirley, NY 11967, USA

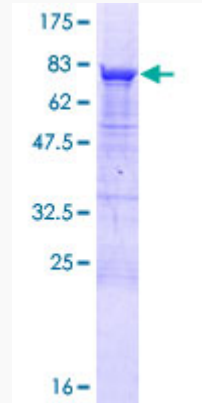
	Antibody Production Protein Array
<b>Notes</b>	Best use within three months from the date of receipt of this protein.
<b>Storage</b>	Store at -80 centigrade. Aliquot to avoid repeated freezing and thawing.
<b>Storage Buffer</b>	50 mM Tris-HCl, 10 mM reduced Glutathione, pH=8.0 in the elution buffer.
<b>GENE INFORMATION</b>	
<b>Gene Name</b>	GRWD1 glutamate-rich WD repeat containing 1 [ Homo sapiens ]
<b>Official Symbol</b>	GRWD1
<b>Synonyms</b>	GRWD1; glutamate-rich WD repeat containing 1; glutamate-rich WD repeat-containing protein 1; GRWD; regulator of ribosome biogenesis 1 homolog (S. cerevisiae); RRB1; WDR28; WD repeat domain 28; glutamate rich WD repeat protein GRWD; CUL4- and DDB1-associated WDR protein 4; regulator of ribosome biogenesis 1 homolog; CDW4; KIAA1942;
<b>Gene ID</b>	83743
<b>mRNA Refseq</b>	NM_031485
<b>Protein Refseq</b>	NP_113673
<b>MIM</b>	610597
<b>UniProt ID</b>	Q9BQ67

 Tel: 1-631-559-9269 1-516-512-3133

 Email: [info@creative-biomart.com](mailto:info@creative-biomart.com)  Fax: 1-631-938-8127

 45-1 Ramsey Road, Shirley, NY 11967, USA

**Quality Control  
Testing**



12.5% SDS-PAGE Stained with Coomassie Blue.

 Tel: 1-631-559-9269 1-516-512-3133

 Email: [info@creative-biomart.com](mailto:info@creative-biomart.com)  Fax: 1-631-938-8127

 45-1 Ramsey Road, Shirley, NY 11967, USA