

Recombinant Human GSC Protein, GST-tagged

Cat. No. GSC-5387H Lot. No. (See product label)

SPECIFICATION

Product Overview	Human GSC full-length ORF (NP_776248.1, 1 a.a. - 257 a.a.) recombinant protein with GST-tag at N-terminal.
Species	Human
Source	Wheat Germ
Description	This gene encodes a member of the bicoid subfamily of the paired (PRD) homeobox family of proteins. The encoded protein acts as a transcription factor and may be autoregulatory. A similar protein in mice plays a role in craniofacial and rib cage development during embryogenesis. [provided by RefSeq]
Molecular Mass	54.5 kDa
AA Sequence	MPASMFSIDNILAARPRCKDSVLPVAHSAAAPVFPALHGDSLYGASGGASSDYGA FYPRPVAPGGAGLPAAVSGSRLGYNNYFYGQLHVQAAPVGPACCGAVPPLGAQQC SCVPTPPGYEGPGSVLVSPVPHQMLPYMNVGTLRTELQLLNQLHCRRKRRHRTIF TDEQLEALENLFQETKYPDVGTRQLARKVHLREEKVEVWFKNRRRAKWRRQKRSS SEESENAEKWNKTSSSKASPEKREEEGKSDLSDS
Applications	Enzyme-linked Immunoabsorbent Assay Western Blot (Recombinant protein) Antibody Production Protein Array

 Tel: 1-631-559-9269 1-516-512-3133

 Email: info@creative-biomart.com  Fax: 1-631-938-8127

 45-1 Ramsey Road, Shirley, NY 11967, USA

Notes	Best use within three months from the date of receipt of this protein.
Storage	Store at -80 centigrade. Aliquot to avoid repeated freezing and thawing.
Storage Buffer	50 mM Tris-HCl, 10 mM reduced Glutathione, pH=8.0 in the elution buffer.

GENE INFORMATION

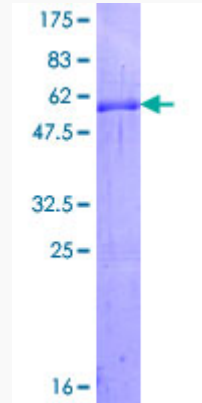
Gene Name	GSC gooseoid homeobox [Homo sapiens]
Official Symbol	GSC
Synonyms	GSC; gooseoid homeobox; homeobox protein gooseoid;
Gene ID	145258
mRNA Refseq	NM_173849
Protein Refseq	NP_776248
MIM	138890
UniProt ID	P56915

 Tel: 1-631-559-9269 1-516-512-3133

 Email: info@creative-biomart.com  Fax: 1-631-938-8127

 45-1 Ramsey Road, Shirley, NY 11967, USA

**Quality Control
Testing**



12.5% SDS-PAGE Stained with Coomassie Blue.

 Tel: 1-631-559-9269 1-516-512-3133

 Email: info@creative-biomart.com  Fax: 1-631-938-8127

 45-1 Ramsey Road, Shirley, NY 11967, USA