

Recombinant Full Length Human GSDMA Protein, C-Flag-tagged

Cat. No. GSDMA-813HFL Lot. No. (See product label)

SPECIFICATION

Product Overview

Recombinant Full Length Human GSDMA Protein, fused to Flag-tag at C-terminus, was expressed in Mammalian cells.

Species

Human

Source

Mammalian Cells

Description

Predicted to enable phosphatidylinositol-4,5-bisphosphate binding activity; phosphatidylinositol-4-phosphate binding activity; and phosphatidylserine binding activity. Involved in apoptotic process. Located in perinuclear region of cytoplasm.

Form

25 mM Tris HCl, pH 7.3, 100 mM glycine, 10% glycerol.

Molecular Mass

49.2 kDa

AA Sequence

MTMFENVTRALARQLNPRGDLTPLDSLIDFKRFHPFCLVLRKRKSTLFWGARYVRTD
 YLLDVLLEPGSSP SDPTDTGNFGFKNMLDTRVEGDVDVPKTVKVKGTAGLSQNSTL
 EVQTLVAPKALETLQERKLAADHPFL KEMQDQGENLYVVMVEVVETVQEVTLERAG
 KAEACFSLPFFAPLGLQGSINHKEAVTIPKGCVLAFRVRQL MVKKGDEWDIPHICND
 NMQTFPPGEGSGEEKVILIQASDVGDVHEGFRTLKEEVQRETQQVEKLSRVGQS SL
 LSSLSKLLGKKKELQDLELALEGALDKGHEVNLEALPKDVLLSKEAVGAILYFVGALT
 ELSEAQKLL VKSMEKKILPVQLKLVESTMEQNFLLDKEGVFPLQPELLSSLGDEEL
 TLTEALVGLSGLEVQRSGPQYMW
 DPDTLPRLCALYAGLSLLQQLTKASTRTRPLEQKLISEEDLAANDILDYKDDDDKV

 Tel: 1-631-559-9269 1-516-512-3133

 Email: info@creative-biomart.com  Fax: 1-631-938-8127

 45-1 Ramsey Road, Shirley, NY 11967, USA

Purity	> 80% as determined by SDS-PAGE and Coomassie blue staining.
Stability	Stable for 12 months from the date of receipt of the product under proper storage and handling conditions. Avoid repeated freeze-thaw cycles.
Storage	Store at -80 centigrade.
Concentration	>50 ug/mL as determined by microplate BCA method.
Preparation	Recombinant protein was captured through anti-DDK affinity column followed by conventional chromatography steps.
Full Length	Full L.

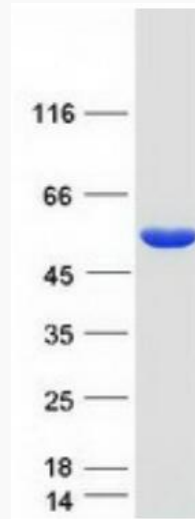
GENE INFORMATION

Gene Name	GSDMA gasdermin A [Homo sapiens (human)]
Official Symbol	GSDMA
Synonyms	GSDM; FKSG9; GSDM1
Gene ID	284110
mRNA Refseq	NM_178171.5
Protein Refseq	NP_835465.2
MIM	611218
UniProt ID	Q96QA5

 Tel: 1-631-559-9269 1-516-512-3133

 Email: info@creative-biomart.com  Fax: 1-631-938-8127

 45-1 Ramsey Road, Shirley, NY 11967, USA



Coomassie blue staining of purified GSDMA protein.

 Tel: 1-631-559-9269 1-516-512-3133

 Email: info@creative-biomart.com  Fax: 1-631-938-8127

 45-1 Ramsey Road, Shirley, NY 11967, USA