

Recombinant Full Length Human GSDMB Protein, C-Flag-tagged

Cat. No. GSDMB-1028HFL **Lot. No.** (See product label)

SPECIFICATION

Product Overview	Recombinant Full Length Human GSDMB Protein, fused to Flag-tag at C-terminus, was expressed in Mammalian cells.
Species	Human
Source	Mammalian Cells
Description	This gene encodes a member of the gasdermin-domain containing protein family. Other gasdermin-family genes are implicated in the regulation of apoptosis in epithelial cells, and are linked to cancer. Alternative splicing and the use of alternative promoters results in multiple transcript variants. Additional variants have been described, but they are candidates for nonsense-mediated mRNA decay (NMD) and are unlikely to be protein-coding.
Form	25 mM Tris HCl, pH 7.3, 100 mM glycine, 10% glycerol.
Molecular Mass	47.2 kDa
AA Sequence	MFSVFEEITRIVVKEMDAGGDMIAVRSLVDADRFRFCFHLVGEKRTFFGCRHYTTGLT LMDILDTDGDKWL DELDSGLQGQKAQEFQILDNDVDSTGELIVRLPKETISGSFQGFHH QKIKISENRISQQYLATLENRKLKR ELPFSFRSINTRENLYLVTTLETVKEETLKSDR QYKFWSQISQGHLSYKHKGQREVTIPPNRVLSYRVK QLVFPNKETMNIHFRGKTKS FPEEKDGASSCLGKSLGSEDSRNMKEKLEDMESVLKDLTEEKRKDVLNSL AKCLGK EDIRQDLEQRVSEVLISGELHMEDPDKPLLSLFFNAAGVLVEARAKAILDFLDALLELS

 Tel: 1-631-559-9269 1-516-512-3133

 Email: info@creative-biomart.com  Fax: 1-631-938-8127

 45-1 Ramsey Road, Shirley, NY 11967, USA

EEQQF VAEALEKGTLP LLKDQVKSVM EQNWDELASSPPDMDYDPEARILCALYVVV
SILLELAEGP TSVSSTRTRPLEQKLISEEDLAANDILDYKDDDDKV

Purity	> 80% as determined by SDS-PAGE and Coomassie blue staining.
Stability	Stable for 12 months from the date of receipt of the product under proper storage and handling conditions. Avoid repeated freeze-thaw cycles.
Storage	Store at -80 centigrade.
Concentration	>50 ug/mL as determined by microplate BCA method.
Preparation	Recombinant protein was captured through anti-DDK affinity column followed by conventional chromatography steps.
Full Length	Full L.

GENE INFORMATION

Gene Name	GSDMB gasdermin B [Homo sapiens (human)]
Official Symbol	GSDMB
Synonyms	GSDML; PP4052; GSDMB-1; PRO2521
Gene ID	55876
mRNA Refseq	NM_001165958.2
Protein Refseq	NP_001159430.1

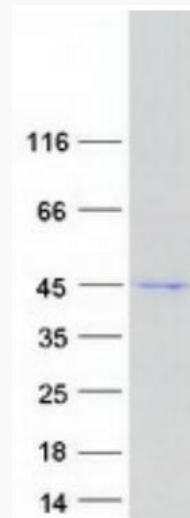
 Tel: 1-631-559-9269 1-516-512-3133

 Email: info@creative-biomart.com  Fax: 1-631-938-8127

 45-1 Ramsey Road, Shirley, NY 11967, USA

MIM 611221

UniProt ID Q8TAX9



Coomassie blue staining of purified GSDMB protein.

 Tel: 1-631-559-9269 1-516-512-3133

 Email: info@creative-biomart.com  Fax: 1-631-938-8127

 45-1 Ramsey Road, Shirley, NY 11967, USA