

Recombinant Human GSDMB Protein, GST-tagged

Cat. No. GSDMB-4391H Lot. No. (See product label)

SPECIFICATION

| | |
|-------------------------|---|
| Product Overview | Human GSDML full-length ORF (AAH25682, 1 a.a. - 411 a.a.) recombinant protein with GST-tag at N-terminal. |
| Species | Human |
| Source | Wheat Germ |
| Description | This gene encodes a member of the gasdermin-domain containing protein family. Other gasdermin-family genes are implicated in the regulation of apoptosis in epithelial cells, and are linked to cancer. Multiple transcript variants encoding different isoforms have been found for this gene. Additional variants have been described, but they are candidates for nonsense-mediated mRNA decay (NMD) and are unlikely to be protein-coding. [provided by RefSeq] |
| Molecular Mass | 70.95 kDa |
| AA Sequence | MFSVFEEITRIVVKEMDAGGDMIAVRSLVDADRFRCFHLVGEKRTFFGCRHYTTGL LMDILDTDGDKWLDELDSGLQGQKAQEFQILDNVDSTGELIVRLPKEITISGSFQGFHH QKIKISENRISQQYLATLENRKLKRELPFSSFRSINTRENLYLVTTETLETVKEETLKSDR QYKFWQSISQGHLSYKHKGQREVTIPPNRVLSYRVKQLVFPNKETMSAGLDIHFRG KTKSFPEGKSLGSEDSRNMKEKLEDMESVLKDLTEEKRKDVLNSLAKCLGKEDIRQ DLEQRVSEVLISRELHMEDSDKPLLSSLFNAAGVLVEARAKAILDFLDALLELSEEQQ FVAEAEKGTLPLLKDQVKSVMQNWDELASSPPDMDYDPEARILCALYVVVSILLE LAEGPTSVSS |

 Tel: 1-631-559-9269 1-516-512-3133

 Email: info@creative-biomart.com  Fax: 1-631-938-8127

 45-1 Ramsey Road, Shirley, NY 11967, USA

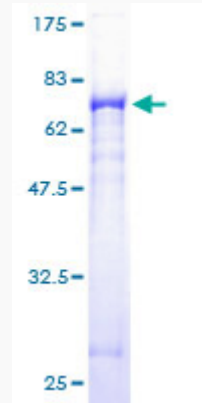


| | |
|-----------------------|---|
| Applications | Enzyme-linked Immunoabsorbent Assay Western Blot (Recombinant protein) Antibody Production Protein Array |
| Notes | Best use within three months from the date of receipt of this protein. |
| Storage | Store at -8 centigrade. Aliquot to avoid repeated freezing and thawing. |
| Storage Buffer | 50 mM Tris-HCl, 10 mM reduced Glutathione, pH=8.0 in the elution buffer. |

GENE INFORMATION

| | |
|------------------------|--|
| Gene Name | GSDMB gasdermin B [Homo sapiens] |
| Official Symbol | GSDMB |
| Synonyms | GSDMB; gasdermin B; gasdermin like , GSDML; gasdermin-B; PRO2521; gasdermin-like protein; GSDML; PP4052; |
| Gene ID | 55876 |
| mRNA Refseq | NM_001042471 |
| Protein Refseq | NP_001035936 |
| MIM | 611221 |
| UniProt ID | Q8TAX9 |

**Quality Control
Testing**



12.5% SDS-PAGE Stained with Coomassie Blue.

 Tel: 1-631-559-9269 1-516-512-3133

 Email: info@creative-biomart.com  Fax: 1-631-938-8127

 45-1 Ramsey Road, Shirley, NY 11967, USA