

Recombinant Human GSDMC Protein (1-508 aa), His-SUMO-tagged

Cat. No. GSDMC-1872H Lot. No. (See product label)

SPECIFICATION

Product Overview Recombinant Human GSDMC Protein (1-508 aa) is produced by E. coli expression system. This protein is fused with a 6xHis-SUMO tag at the N-terminal. Research Area: Cancer. Protein Description: Full Length.

Species Human

Source E.coli

ProteinLength 1-508 aa

Form Tris-based buffer,50% glycerol

Molecular Mass 73.7 kDa


AA Sequence

```

MPSMLERISKNLVKEIGSKDLTPVKYLLSATKLRQFVILRKKKDSRSSFWEQSDYVPV
EFSLNDILEPSSSVLETVVTGPFHFSDIMIQQHKADMGVNVGIEVSVSGEASVDHGC
SLEFQIVTIPSPNLEDFQKRKLLDPEPSFLKECRRRGDNLYVVTEAVELINNTVLYDSS
SVNILGKIALWITYGKGGQGGESLRVKKKALTQKGMVMAYKRKQLVIKEKAILISDD
DEQRTFQDEYEISEMVGYCAARSEGLLP SFHTISPTLFNASSNDMCLKPELFLTQQF
LSGHLPKYEQVHILPVGRIEFPWFQNFKHLQEEVFQIKIKTLAQLSKDVQDVMFYSLA
MLRDRGALQDLMNMLELDSSGHLDGPGGAILKKLQQDSNHAWFNPKDPILYLLEAI
MVLSDFFQHDLLACSMKRILLQQQELVRSILEPNFRYPWSIPFTLPELLAPLQSEGL
AITYGLLEECGLRMELDNPRSTWDVEAKMPLSALYGTLSSLQQLAEA
    
```

 Tel: 1-631-559-9269 1-516-512-3133

 Email: info@creative-biomart.com  Fax: 1-631-938-8127

 45-1 Ramsey Road, Shirley, NY 11967, USA

Purity	> 90% as determined by SDS-PAGE.
Notes	Repeated freezing and thawing is not recommended. Store working aliquots at 4 centigrade for up to one week.
Storage	The shelf life is related to many factors, storage state, buffer ingredients, storage temperature and the stability of the protein itself. Generally, the shelf life of liquid form is 6 months at -20 centigrade/-80 centigrade. The shelf life of lyophilized form is 12 months at -20 centigrade/-80 centigrade.
Concentration	A hardcopy of COA with reconstitution instruction is sent along with the products.

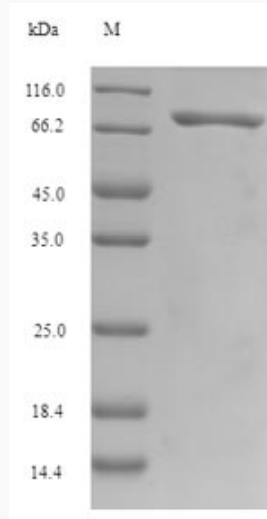
GENE INFORMATION

Gene Name	GSDMC gasdermin C [Homo sapiens]
Official Symbol	GSDMC
Synonyms	GSDMC; gasdermin C; MLZE;
Gene ID	56169
mRNA Refseq	NM_031415
Protein Refseq	NP_113603
MIM	608384
UniProt ID	Q9BYG8

 Tel: 1-631-559-9269 1-516-512-3133

 Email: info@creative-biomart.com  Fax: 1-631-938-8127

 45-1 Ramsey Road, Shirley, NY 11967, USA



(Tris-Glycine gel) Discontinuous SDS-PAGE (reduced) with 5% enrichment gel and 15% separation gel.

 Tel: 1-631-559-9269 1-516-512-3133

 Email: info@creative-biomart.com  Fax: 1-631-938-8127

 45-1 Ramsey Road, Shirley, NY 11967, USA