

Recombinant Human GSDMD protein, GST-tagged

Cat. No. GSDMD-32H **Lot. No.** (See product label)

SPECIFICATION

Product Overview	Recombinant Human GSDMD(1 a.a. - 484 a.a.) fused with GST tag at N-terminal was expressed in Wheat Germ.
Species	Human
Source	Wheat Germ
ProteinLength	1-484 a.a.
Description	Gasdermin D is a member of the gasdermin family. Members of this family appear to play a role in regulation of epithelial proliferation. Gasdermin D has been suggested to act as a tumor suppressor. Alternatively spliced transcript variants have been described.
Form	50 mM Tris-HCl, 10 mM reduced Glutathione, pH=8.0 in the elution buffer.
Molecular Mass	78.98 kDa
AA Sequence	<p>MGSAFERVRRVQELDHGGEFIPVTSLSSTGFQPYCLVVRKPSSSWFWKPRYK CVNLSIKDILEPDAAEPDVQRGRSFHFYDAMDGQIQGSVELAAPGQAKIAGGAAVSD SSSTSMMNVYSLSDPNTWQTLHERHLRQPEHKVLQQLRSRGDNVYVVTEVLQTQ KEVEVTRTHKREGSGRFSPLPGATCLQGEQGHLSSQKKTVTIPSGSTLAFRVAQLVID SDLDVLLFPDKKQRTFQPPATGHKRSTSEGAWPQLPSGLSMMRCLHNFLTDGVPA EGAFTEDFQGLRAEVETISKELELLDRELCQLLLEGLVLRDQLALRALEEAELEQG QSLGPVEPLDGPAGAVLECLVLSSGMLVPELAIPVVYLLGALTMLSETQHKLLAEALE</p>

 Tel: 1-631-559-9269 1-516-512-3133

 Email: info@creative-biomart.com  Fax: 1-631-938-8127

 45-1 Ramsey Road, Shirley, NY 11967, USA

SQTLLGPLELVGSLLEQSAPWQERSTMSLPPGLLGNSWGEGAPAWVLLDECGLLEL
GEDTPHVCWEPQAQGRMCALYASLALLSGLSQEPH

Applications

Enzyme-linked Immunoabsorbent Assay; Western Blot (Recombinant protein);
Antibody Production; Protein Array

Notes

Best use within three months from the date of receipt of this protein.

Storage

Store at -80 centigrade. Aliquot to avoid repeated freezing and thawing.

GENE INFORMATION

Gene Name

GSDMD gasdermin D [Homo sapiens]

Official Symbol

GSDMD

Synonyms

GSDMD; gasdermin D; gasdermin domain containing 1 , GSDMDC1; gasdermin-D;
DF5L; FLJ12150; gasdermin domain containing 1; gasdermin domain-containing
protein 1; DFNA5L; FKSG10; GSDMDC1;

Gene ID

79792

mRNA Refseq

NM_001166237

Protein Refseq

NP_001159709

UniProt ID

P57764

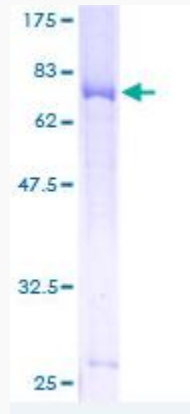
**Chromosome
Location**

8q24.3

 Tel: 1-631-559-9269 1-516-512-3133

 Email: info@creative-biomart.com  Fax: 1-631-938-8127

 45-1 Ramsey Road, Shirley, NY 11967, USA



 Tel: 1-631-559-9269 1-516-512-3133

 Email: info@creative-biomart.com  Fax: 1-631-938-8127

 45-1 Ramsey Road, Shirley, NY 11967, USA