

Recombinant Human GSG1 Protein, GST-tagged

Cat. No. GSG1-4392H Lot. No. (See product label)

SPECIFICATION

Product Overview	Human GSG1 full-length ORF (AAH01796.1, 1 a.a. - 282 a.a.) recombinant protein with GST-tag at N-terminal.
Species	Human
Source	Wheat Germ
Description	GSG1 (Germ Cell Associated 1) is a Protein Coding gene. GO annotations related to this gene include RNA polymerase binding. An important paralog of this gene is GSG1L.
Molecular Mass	57.5 kDa
AA Sequence	MELSKAFSGQRTLLSAILSMLSLSFSTTSLLSNYWFVGTQKVPKPLCEKGLAAKCFD MPVSLDGDNTSTQEVVQYNWETGDDRFSSFRSGMWLSCEETVEEPGERCRS FIELTPPAKRGEKGLLEFATLQGPCHPTLRFGGKRLMEKASLPSPLGLCGKNPMVI PGNADHLHRTSIHQLPATNRLATHWEPCLWAQTERLCCCFLCPVRSPGDGGPHD VFTSLPSDCQLGSRRETTCLELWLGLLHGLALLHLLHGVGCHHLQHVHQDGAGVQ VQA
Applications	Enzyme-linked Immunoabsorbent Assay Western Blot (Recombinant protein) Antibody Production Protein Array

 Tel: 1-631-559-9269 1-516-512-3133

 Email: info@creative-biomart.com  Fax: 1-631-938-8127

 45-1 Ramsey Road, Shirley, NY 11967, USA

Notes	Best use within three months from the date of receipt of this protein.
Storage	Store at -8 centigrade. Aliquot to avoid repeated freezing and thawing.
Storage Buffer	50 mM Tris-HCl, 10 mM reduced Glutathione, pH=8.0 in the elution buffer.

GENE INFORMATION

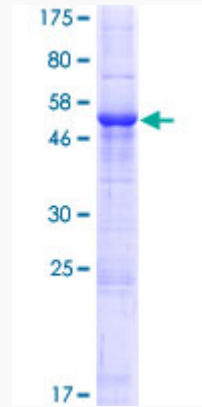
Gene Name	GSG1 germ cell associated 1 [Homo sapiens]
Official Symbol	GSG1
Synonyms	GSG1; germ cell associated 1; germ cell-specific gene 1 protein; MGC3146; MGC111023;
Gene ID	83445
mRNA Refseq	NM_001080554
Protein Refseq	NP_001074023
UniProt ID	Q2KHT4

 Tel: 1-631-559-9269 1-516-512-3133

 Email: info@creative-biomart.com  Fax: 1-631-938-8127

 45-1 Ramsey Road, Shirley, NY 11967, USA

**Quality Control
Testing**



12.5% SDS-PAGE Stained with Coomassie Blue.

 Tel: 1-631-559-9269 1-516-512-3133

 Email: info@creative-biomart.com  Fax: 1-631-938-8127

 45-1 Ramsey Road, Shirley, NY 11967, USA