

Recombinant Human GSK3A Protein, MYC/DDK-tagged, C13 and N15-labeled

Cat. No. GSK3A-055H **Lot. No.** (See product label)

SPECIFICATION

Product Overview	GSK3A MS Standard C13 and N15-labeled recombinant protein (NP_063937) with a C-terminal MYC/DDK tag, was expressed in HEK293 cells.
Species	Human
Source	HEK293
Description	This gene encodes a multifunctional Ser/Thr protein kinase that is implicated in the control of several regulatory proteins including glycogen synthase, and transcription factors, such as JUN. It also plays a role in the WNT and PI3K signaling pathways, as well as regulates the production of beta-amyloid peptides associated with Alzheimer's disease.
Molecular Mass	51 kDa
AA Sequence	MSGGGPSGGGPGGSGRARTSSFAEPGGGGGGGGGGPGGSASGPGGTGGGKAS VGAMGGGVGASSSGGGPGGSGGGGSGGPGAGTSFPPPGVKLGRDSGKVTTVVA TLGQGPERSQEVAYTDIKVINGNSFGVVYQARLAETRELVAIKKVLQDKRFKNRELQI MRKLDHCNIVRLRYFFYSSGEKKDELYLNLVLEYVPETVYRVARHFTKAKLTIPILYVK VYMYQLFRSLAYIHSQGVCHRDIKPNLLVDPDTAVLKLCDFGSAKQLVRGEPNVS YICSRYYRAPELIFGATDYTSSIDVWSAGCVLAELLGQPIFPGDSGVDQLVEIIVLGT PTREQUIREMNPNYTEFKFPQIKAHPWTKVFKSRTPPEAIALCSSLLEYTPSSRRLSPLE ACAHSFFDELRLCLGTQLPNNRPLPPLFNFSAGELSIQPSLNAILIPPHLRSPAGTTTTLT

 Tel: 1-631-559-9269 1-516-512-3133

 Email: info@creative-biomart.com  Fax: 1-631-938-8127

 45-1 Ramsey Road, Shirley, NY 11967, USA

PSSQALTETPTSSDWQSTDATPTLTNSSTRTRPLEQKLISEEDLAANDILDYKDDDD
KV

Purity > 80% as determined by SDS-PAGE and Coomassie blue staining

Stability Stable for 3 months from receipt of products under proper storage and handling conditions.

Storage Store at -80 centigrade. Avoid repeated freeze-thaw cycles.

Concentration 50 µg/mL as determined by BCA

Storage Buffer 100 mM glycine, 25 mM Tris-HCl, pH 7.3.

GENE INFORMATION

Gene Name GSK3A glycogen synthase kinase 3 alpha [Homo sapiens (human)]

Official Symbol GSK3A

Synonyms GSK3A; glycogen synthase kinase 3 alpha; DKFZp686D0638; glycogen synthase kinase-3 alpha; GSK-3 alpha; serine/threonine-protein kinase GSK3A; EC 2.7.11.1; EC 2.7.11.26

Gene ID 2931

mRNA Refseq NM_019884

Protein Refseq NP_063937

MIM 606784

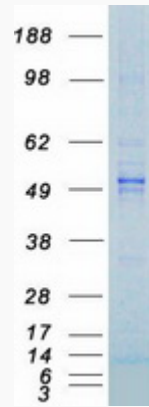
 Tel: 1-631-559-9269 1-516-512-3133

 Email: info@creative-biomart.com  Fax: 1-631-938-8127

 45-1 Ramsey Road, Shirley, NY 11967, USA

UniProt ID P49840

SDS-PAGE



 Tel: 1-631-559-9269 1-516-512-3133

 Email: info@creative-biomart.com  Fax: 1-631-938-8127

 45-1 Ramsey Road, Shirley, NY 11967, USA