

# Active Recombinant Full Length Human GSK3A Protein, C-Flag-tagged

**Cat. No.** GSK3A-156HFL    **Lot. No.** (See product label)

## SPECIFICATION

<b>Product Overview</b>	Recombinant Full Length Human GSK3A Protein, fused to Flag-tag at C-terminus, was expressed in Mammalian cells.
<b>Species</b>	Human
<b>Source</b>	Mammalian Cells
<b>Description</b>	This gene encodes a multifunctional Ser/Thr protein kinase that is implicated in the control of several regulatory proteins including glycogen synthase, and transcription factors, such as JUN. It also plays a role in the WNT and PI3K signaling pathways, as well as regulates the production of beta-amyloid peptides associated with Alzheimer's disease.
<b>Form</b>	25 mM Tris HCl, pH 7.3, 100 mM glycine, 10% glycerol.
<b>Bio-activity</b>	In vitro kinase assay (enzyme) Thermophoresis assay
<b>Molecular Mass</b>	50.8 kDa
<b>AA Sequence</b>	MSGGGPSGGGPGGSGRARTSSFAEPGGGGGGGGGGPGGASGPGGTGGGKAS VGAMGGGVGASSSGGGPG GSGGGGSGGPGAGTSFPPPGVKLGRDSGKVTTVVA TLGQGPERSQEVAYTDIKVINGSGFGVVYQARLAE TRELVAIKKVLQDKRFKNRELQ IMRKLDHCNIVRLRYFFYSSGEKKDELYLNLVLEYVPETVYRVARHFT KAKLTIPILYV

 Tel: 1-631-559-9269    1-516-512-3133

 Email: [info@creative-biomart.com](mailto:info@creative-biomart.com)     Fax: 1-631-938-8127

 45-1 Ramsey Road, Shirley, NY 11967, USA



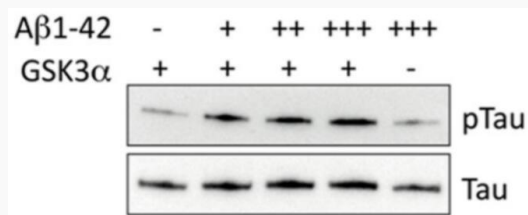
KVYMYQLFRSLAYIHSQGVCHRDIKPQNLLVDPDTAVLKLCDFGSAKQLVRGEPNVS  
 YI CSRYRRAPELIFGATDYTSSIDVWSAGCVLAELLLGQPIFPGDSGVDQLVEIHKVLG  
 TPTREQUIREMNP N YTEFKFPQIKAHPWTKVFKSRTPEAIALCSSLLEYTPSSRLSPL  
 EACAHSFFDELRLCLGTQLPNNRPLP  
 PLFNFSAGELSIQPSLNAILIPPHLRSPAGTTTTLPSSQALTETPTSSDWQSTDATPTL  
 TNSSTRTRPLEQKLISEEDLAANDILDYKDDDDKV

<b>Purity</b>	> 80% as determined by SDS-PAGE and Coomassie blue staining.
<b>Stability</b>	Stable for 12 months from the date of receipt of the product under proper storage and handling conditions. Avoid repeated freeze-thaw cycles.
<b>Storage</b>	Store at -80 centigrade.
<b>Concentration</b>	>50 ug/mL as determined by microplate BCA method.
<b>Preparation</b>	Recombinant protein was captured through anti-DDK affinity column followed by conventional chromatography steps.
<b>Protein Families</b>	Druggable Genome, Protein Kinase
<b>Protein Pathways</b>	Chemokine signaling pathway
<b>Full Length</b>	Full L.

## GENE INFORMATION

<b>Gene Name</b>	GSK3A glycogen synthase kinase 3 alpha [ Homo sapiens (human) ]
<b>Official Symbol</b>	GSK3A

<b>Synonyms</b>	DKFZp686D0638
<b>Gene ID</b>	2931
<b>mRNA Refseq</b>	NM_019884.3
<b>Protein Refseq</b>	NP_063937.2
<b>MIM</b>	606784
<b>UniProt ID</b>	P49840

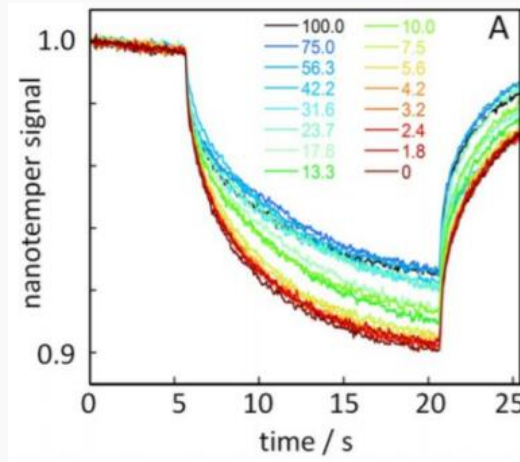


Tau phosphorylation assay. Tau and pTau were detected in Western blot after a kinase assay reaction in the absence (-) or the presence of Abeta1-40 at 5 (+), 50 (++) , or 500 nM (+++), and the absence (-) or the presence (+) of GSK3alpha.

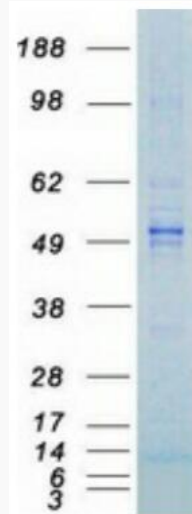
 Tel: 1-631-559-9269 1-516-512-3133

 Email: [info@creative-biomart.com](mailto:info@creative-biomart.com)  Fax: 1-631-938-8127

 45-1 Ramsey Road, Shirley, NY 11967, USA



Thermophoresis analysis of the interaction between Abeta42 and GSK3alpha. Thermophoresis time traces at 37 centigrade for the 16 capillaries containing solutions with 60 nM Abeta42 alone and varying concentrations of GSK3alpha from 0 to 188 nM. The example shown is recorded after 635 min, and the GSK3alpha concentrations are listed as the percentage of the highest (188 nM).




Tel: 1-631-559-9269 1-516-512-3133

Email: [info@creative-biomart.com](mailto:info@creative-biomart.com) Fax: 1-631-938-8127


45-1 Ramsey Road, Shirley, NY 11967, USA



Coomassie blue staining of purified GSK3A.

 Tel: 1-631-559-9269 1-516-512-3133

 Email: [info@creative-biomart.com](mailto:info@creative-biomart.com)  Fax: 1-631-938-8127

 45-1 Ramsey Road, Shirley, NY 11967, USA