

Recombinant Full Length Human GSK3B Protein, C-Flag-tagged

Cat. No. GSK3B-430HFL **Lot. No.** (See product label)

SPECIFICATION

Product Overview	Recombinant Full Length Human GSK3B Protein, fused to Flag-tag at C-terminus, was expressed in Mammalian cells.
Species	Human
Source	Mammalian Cells
Description	The protein encoded by this gene is a serine-threonine kinase belonging to the glycogen synthase kinase subfamily. It is a negative regulator of glucose homeostasis and is involved in energy metabolism, inflammation, ER-stress, mitochondrial dysfunction, and apoptotic pathways. Defects in this gene have been associated with Parkinson disease and Alzheimer disease.
Form	25 mM Tris HCl, pH 7.3, 100 mM glycine, 10% glycerol.
Molecular Mass	47.9 kDa
AA Sequence	MSGRPRTTSFAESCKPVQQPSAFGSMKVS RDKDGSKVTTVVATPGQGPD RPQEV SYTDTKVIGNGSFGVV YQAKLCDSGELVAIKKVLQDKRFKNRELQIMRKL DHCNIVR LRYFFYSSGEKKDEVYLN LVLVDYVPETVY RVARHYSRAKQTL PVIYVKLYMYQLFRS LAYIHSFGICH RDIKPQNLLLPDTAVLKL CDFGSAKQLVRG EPNVSYICSRYYRAPE LIFGATDYTSSIDVWSAGCVLA ELLLGQPIFPGDSGVDQLVEI IKVLGTPTREQ IREM NPNYTEFKFPQIKAHPWTKDSSGTGHFTSGVRVFRP RTPPEAIALCSRLL EYTP TAR LTPLEACAH SFFDEL RDPNVKLPNGR DTPALFNFTTQELSSNPPLATILIPPHARIQA

 Tel: 1-631-559-9269 1-516-512-3133

 Email: info@creative-biomart.com  Fax: 1-631-938-8127

 45-1 Ramsey Road, Shirley, NY 11967, USA

	<p>AASTPTNATAASDANTGDRGQ TNNAASASASNSTTRTRPLEQKLISEEDLAANDILDYKDDDDKV</p>
Purity	> 80% as determined by SDS-PAGE and Coomassie blue staining.
Stability	Stable for 12 months from the date of receipt of the product under proper storage and handling conditions. Avoid repeated freeze-thaw cycles.
Storage	Store at -80 centigrade.
Concentration	>50 ug/mL as determined by microplate BCA method.
Preparation	Recombinant protein was captured through anti-DDK affinity column followed by conventional chromatography steps.
Protein Families	Druggable Genome, Protein Kinase
Protein Pathways	Alzheimer's disease, Axon guidance, Basal cell carcinoma, B cell receptor signaling pathway, Cell cycle, Chemokine signaling pathway, Colorectal cancer, Endometrial cancer, ErbB signaling pathway, Focal adhesion, Hedgehog signaling pathway, Insulin signaling pathway, Melanogenesis, Neurotrophin signaling pathway, Pathways in cancer, Prostate cancer, T cell receptor signaling pathway, Wnt signaling pathway
Full Length	Full L.

GENE INFORMATION

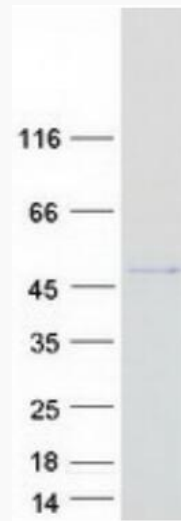
Gene Name	GSK3B glycogen synthase kinase 3 beta [Homo sapiens (human)]
Official Symbol	GSK3B

 Tel: 1-631-559-9269 1-516-512-3133

 Email: info@creative-biomart.com  Fax: 1-631-938-8127

 45-1 Ramsey Road, Shirley, NY 11967, USA

Synonyms	glycogen synthase kinase-3 beta; glycogen synthase kinase 3 beta; GSK3beta isoform
Gene ID	2932
mRNA Refseq	NM_002093.4
Protein Refseq	NP_002084.2
MIM	605004
UniProt ID	P49841



Coomassie blue staining of purified GSK3B protein.

 Tel: 1-631-559-9269 1-516-512-3133

 Email: info@creative-biomart.com  Fax: 1-631-938-8127

 45-1 Ramsey Road, Shirley, NY 11967, USA