

## Active Recombinant Human GSK3B protein, His-tagged

Cat. No. GSK3B-616H Lot. No. (See product label)

### SPECIFICATION

<b>Product Overview</b>	Active Recombinant Human GSK3B protein(NP_002084.2) (Met 1-Thr 433) was expressed in Insect Cells, fused with a polyhistidine tag at the N-terminus.
<b>Species</b>	Human
<b>Source</b>	Insect Cells
<b>ProteinLength</b>	1-433 aa
<b>Form</b>	Supplied as sterile 20mM Tris, 500mM NaCl, pH 7.4, 25% glycerol, 0.5mM PMSF, 0.5mM EDTA.
<b>Bio-activity</b>	1. The specific activity was determined to be 45 nmol/min/mg using synthetic Phospho-Glycogen Synthase Peptide-2 (YRRAAVPPSPSLSRHSSPHQpSEDEEE) as substrate. 2. Immobilized His-GSK3B at 10 µg/ml (100 µl/well) can bind biotinylated human HG3C-CTNNB1, EC50 of biotinylated human HG3C-CTNNB1 is 0.15-0.35 µg/ml.
<b>Molecular Mass</b>	The recombinant human GSK3B consists of 452 amino acids and predicts a molecular mass of 50.4 kDa. The apparent molecular mass of rhGSK3B is approximately 44-48 kDa in SDS-PAGE under reducing conditions.
<b>Endotoxin</b>	< 1.0 EU per µg of the protein as determined by the LAL method.
<b>Purity</b>	> 90 % as determined by SDS-PAGE

 Tel: 1-631-559-9269 1-516-512-3133

 Email: [info@creative-biomart.com](mailto:info@creative-biomart.com)  Fax: 1-631-938-8127

 45-1 Ramsey Road, Shirley, NY 11967, USA

**Storage** Store it under sterile conditions at -20°C to -80°C upon receiving. Recommend to aliquot the protein into smaller quantities for optimal storage. Avoid repeated freeze-thaw cycles.

**Concentration** 0.2-1.0 mg/mL.

## GENE INFORMATION

**Gene Name** GSK3B glycogen synthase kinase 3 beta [ Homo sapiens ]

**Official Symbol** GSK3B

**Synonyms** GSK3B; glycogen synthase kinase 3 beta; glycogen synthase kinase-3 beta; GSK-3 beta; GSK3beta isoform; serine/threonine-protein kinase GSK3B;

**Gene ID** 2932

**mRNA Refseq** NM\_001146156

**Protein Refseq** NP\_001139628

**MIM** 605004

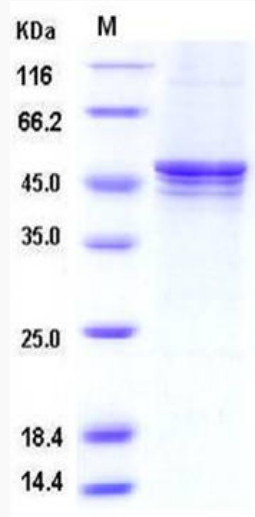
**UniProt ID** P49841

 Tel: 1-631-559-9269 1-516-512-3133

 Email: [info@creative-biomart.com](mailto:info@creative-biomart.com)  Fax: 1-631-938-8127

 45-1 Ramsey Road, Shirley, NY 11967, USA

**SDS-PAGE**



 Tel: 1-631-559-9269 1-516-512-3133

 Email: [info@creative-biomart.com](mailto:info@creative-biomart.com)  Fax: 1-631-938-8127

 45-1 Ramsey Road, Shirley, NY 11967, USA