

Recombinant Human GSR Protein (Met44-Arg522), N-His tagged

Cat. No. GSR-2514H **Lot. No.** (See product label)

SPECIFICATION

Product Overview	Recombinant human GSR (Met44-Arg522) protein fused with the N-His tag was expressed in E. coli.
Species	Human
Source	E.coli
ProteinLength	Met44-Arg522
Description	This gene encodes a member of the class-I pyridine nucleotide-disulfide oxidoreductase family. This enzyme is a homodimeric flavoprotein. It is a central enzyme of cellular antioxidant defense, and reduces oxidized glutathione disulfide (GSSG) to the sulfhydryl form GSH, which is an important cellular antioxidant. Rare mutations in this gene result in hereditary glutathione reductase deficiency. Multiple alternatively spliced transcript variants encoding different isoforms have been found.
Molecular Mass	54.01 kDa
Purity	>90 % as determined by SDS-PAGE.
Notes	For research use only.
Storage	Use a manual defrost freezer and avoid repeated freeze thaw cycles. Store at 2 to 8 centigrade for one week. Store at -20 to -80 centigrade for twelve months from the

 Tel: 1-631-559-9269 1-516-512-3133

 Email: info@creative-biomart.com  Fax: 1-631-938-8127

 45-1 Ramsey Road, Shirley, NY 11967, USA

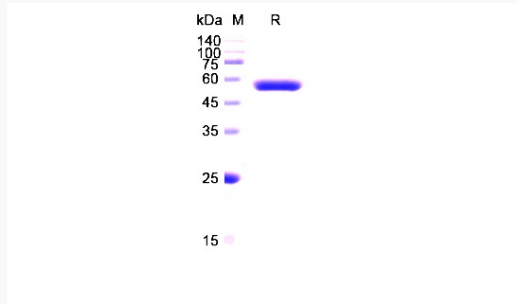
	date of receipt.
Storage Buffer	0.01M PBS, pH 7.4, 0.02 % NLS
Reconstitution	Reconstitute in sterile water for a stock solution.
Shipping	In general, proteins are provided as lyophilized powder/frozen liquid. They are shipped out with dry ice/blue ice unless customers require otherwise.
GENE INFORMATION	
Gene Name	GSR glutathione reductase [Homo sapiens (human)]
Official Symbol	GSR
Synonyms	GSR; glutathione reductase; glutathione reductase, mitochondrial; GR; GRase; MGC78522;
Gene ID	2936
mRNA Refseq	NM_000637
Protein Refseq	NP_000628
MIM	138300
UniProt ID	P00390

 Tel: 1-631-559-9269 1-516-512-3133

 Email: info@creative-biomart.com  Fax: 1-631-938-8127

 45-1 Ramsey Road, Shirley, NY 11967, USA

SDS-PAGE



 Tel: 1-631-559-9269 1-516-512-3133

 Email: info@creative-biomart.com  Fax: 1-631-938-8127

 45-1 Ramsey Road, Shirley, NY 11967, USA