

Recombinant Human GSR Protein, Myc/DDK-tagged, C13 and N15-labeled

Cat. No. GSR-3139H **Lot. No.** (See product label)

SPECIFICATION

Product Overview	GSR MS Standard C13 and N15-labeled recombinant protein (NP_000628) with a C-terminal MYC/DDK tag, was expressed in HEK293 cells.
Species	Human
Source	HEK293
Description	This gene encodes a member of the class-I pyridine nucleotide-disulfide oxidoreductase family. This enzyme is a homodimeric flavoprotein. It is a central enzyme of cellular antioxidant defense, and reduces oxidized glutathione disulfide (GSSG) to the sulfhydryl form GSH, which is an important cellular antioxidant. Rare mutations in this gene result in hereditary glutathione reductase deficiency. Multiple alternatively spliced transcript variants encoding different isoforms have been found.
Molecular Mass	56.3 kDa
AA Sequence	MALLPRALSAGAGPSWRRARAARAFRGFLLLLPEPAALTRALSRAMACRQEPQPQGP PPAAGAVASYDYLVIGGGSGGLASARRAAELGARAAVVESHKLGTCVNVGCVPKK VMWNTAVHSEFMHDHADYGFPSCGKFNWRVIEKRDAYVSRLNAIYQNNLTKSHI EIIRGHAAFTSDPKPTIEVSGKKYTAPHILIATGGMPSTPHESQIPGASLGITSDGFFQL EELPGRSVIVGAGYIAVEMAGILSALGSKTSLMIRHDKVLRSFDSMISTNCTEELNA GVEVLKFSQVKEVKKTLGLEVSMVTAVPGRLPVMTMIPDVDCLLWAIGRVPNTKDL SLNKLGIQTDDKGHIIVDEFQNTNVKGIYAVGDVCGKALLTPVAIAAGRKLAHRLFYK

 Tel: 1-631-559-9269 1-516-512-3133

 Email: info@creative-biomart.com  Fax: 1-631-938-8127

 45-1 Ramsey Road, Shirley, NY 11967, USA



EDSKLDYNNIPTVVFSHPPIGTVGLTEDEAIHKYGIENVKTYSTSFTPMYHAVTKRKT
KCVMMKMCANKEEKVVGIIHQGLGCDEMLQGFVAVKMGATKADFDNTVAIHPTS
SEELVTLRTRTRPLEQKLISEEDLAANDILDYKDDDDKV

Purity > 80% as determined by SDS-PAGE and Coomassie blue staining

Stability Stable for 3 months from receipt of products under proper storage and handling conditions.

Storage Store at -80 centigrade. Avoid repeated freeze-thaw cycles.

Concentration 50 µg/mL as determined by BCA

Storage Buffer 100 mM glycine, 25 mM Tris-HCl, pH 7.3.

GENE INFORMATION

Gene Name GSR glutathione reductase [Homo sapiens (human)]

Official Symbol GSR

Synonyms GSR; glutathione reductase; glutathione reductase, mitochondrial; GR; GRase; MGC78522;

Gene ID 2936

mRNA Refseq NM_000637

Protein Refseq NP_000628

MIM 138300

Tel: 1-631-559-9269 1-516-512-3133

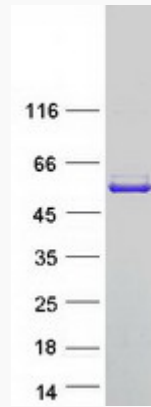
Email: info@creative-biomart.com Fax: 1-631-938-8127

45-1 Ramsey Road, Shirley, NY 11967, USA

UniProt ID

P00390

SDS-PAGE



 Tel: 1-631-559-9269 1-516-512-3133

 Email: info@creative-biomart.com  Fax: 1-631-938-8127

 45-1 Ramsey Road, Shirley, NY 11967, USA