

Recombinant Human GSS Protein, Myc/DDK-tagged, C13 and N15-labeled

Cat. No. GSS-3695H **Lot. No.** (See product label)

SPECIFICATION

Product Overview

GSS MS Standard C13 and N15-labeled recombinant protein (NP_000169) with a C-terminal MYC/DDK tag, was expressed in HEK293 cells.

Species

Human

Source

HEK293

Description

Glutathione is important for a variety of biological functions, including protection of cells from oxidative damage by free radicals, detoxification of xenobiotics, and membrane transport. The protein encoded by this gene functions as a homodimer to catalyze the second step of glutathione biosynthesis, which is the ATP-dependent conversion of gamma-L-glutamyl-L-cysteine to glutathione. Defects in this gene are a cause of glutathione synthetase deficiency.

Molecular Mass

52.4 kDa

AA Sequence

MATNWGSLQDKQQLLEELARQAVDRALAEGLLRRTSSEVVSYAPFTLFPSL
 VPSALLEQAYAVQMDFNLLVDAVSQNAAFLEQTLSSSTIKQDDFTARLFDIHKQVLKE
 GIAQTVFLGLNRSDFMFQRSADGSPALKQIEINTISASFGGLASRTPAVHRHVLVLS
 KTKEAGKILSNPSKGLALGIAKAWELYGSPNALVLLIAQEKERNIFDQRAIENELLAR
 NIHVIRRTFEDISEKGLDQDRRLFVDGQEIADVYFRDGYMMPRQYSLQNWEARLLL
 RSHAAKCPDIATQLAGTKKVQQELSRPGMLEMLLPQPEAVARLRATFAGLYSLDV
 GEEGDQAI AEALAPSRLFVLPKQREGGNNLYGEEMVQALKQLKDSEERASYILME

 Tel: 1-631-559-9269 1-516-512-3133

 Email: info@creative-biomart.com  Fax: 1-631-938-8127

 45-1 Ramsey Road, Shirley, NY 11967, USA

KIEPEPFENCLLRPGSPARVVQCISELGIFGVYVRQEKTLVMNKHVGHLLRTKAIEHA
DGGVAAGVAVLDPYPVTRTRPLEQKLISEEDLAANDILDYKDDDDKV

Purity > 80% as determined by SDS-PAGE and Coomassie blue staining

Stability Stable for 3 months from receipt of products under proper storage and handling conditions.

Storage Store at -80 centigrade. Avoid repeated freeze-thaw cycles.

Concentration 50 µg/mL as determined by BCA

Storage Buffer 100 mM glycine, 25 mM Tris-HCl, pH 7.3.

GENE INFORMATION

Gene Name GSS glutathione synthetase [Homo sapiens (human)]

Official Symbol GSS

Synonyms GSS; glutathione synthetase; GSH-S; GSH synthetase; glutathione synthase; GSHS; MGC14098;

Gene ID 2937

mRNA Refseq NM_000178

Protein Refseq NP_000169

MIM 601002

 Tel: 1-631-559-9269 1-516-512-3133

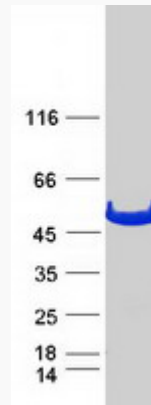
 Email: info@creative-biomart.com  Fax: 1-631-938-8127

 45-1 Ramsey Road, Shirley, NY 11967, USA

UniProt ID

P48637

SDS-PAGE



 Tel: 1-631-559-9269 1-516-512-3133

 Email: info@creative-biomart.com  Fax: 1-631-938-8127

 45-1 Ramsey Road, Shirley, NY 11967, USA