

## Recombinant Human GSS Protein, GST-tagged

**Cat. No.** GSS-4406H    **Lot. No.** (See product label)

### SPECIFICATION

<b>Product Overview</b>	Human GSS full-length ORF ( AAH07927, 1 a.a. - 474 a.a.) recombinant protein with GST-tag at N-terminal.
<b>Species</b>	Human
<b>Source</b>	Wheat Germ
<b>Description</b>	Glutathione is important for a variety of biological functions, including protection of cells from oxidative damage by free radicals, detoxification of xenobiotics, and membrane transport. The protein encoded by this gene functions as a homodimer to catalyze the second step of glutathione biosynthesis, which is the ATP-dependent conversion of gamma-L-glutamyl-L-cysteine to glutathione. Defects in this gene are a cause of glutathione synthetase deficiency. [provided by RefSeq]
<b>Molecular Mass</b>	77.77 kDa
<b>AA Sequence</b>	MATNWGSELLQDKQQLEELARQAVDRALAEGLVLLRSTSEVVSYPFTLFPSL VPSALLEQAYAVQMDFNLLVDAVSQNAAFLEQTLSSSTIKQDDFTARLFDIHKQVLKE GIAQTVFLGLNRSYMFQRSADGSPALKQIEINTISASFGGLASRTPAVHRHVLSVLS KTKEAGKILSNPSKGLALGIAKAWELYGSPNALVLLIAQEKERNIFDQRAIENELLAR NIHVIRRTFEDISEKGSLLDQDRRLFVDGQEIADVYFRDGYMPPRQYSLQNWEARLLL RSHAAKCPDIATQLAGTKKVQQELSRPGMLEMLLPQPEAVARLRATFAGLYSLDV GEEGDQAI AEALAAPSRFVLKPRQREGGNNLYGEEMVQALKQLKDSEERASYILME KIEPEPFENCLLRPGSPARVVQCISELGFVYVRQEKTLVMNKHVGHLLRRTKAIEHA

 Tel: 1-631-559-9269    1-516-512-3133

 Email: [info@creative-biomart.com](mailto:info@creative-biomart.com)     Fax: 1-631-938-8127

 45-1 Ramsey Road, Shirley, NY 11967, USA

DGGVAAGVAVLDNPYPV

**Applications**

Enzyme-linked Immunoabsorbent Assay  
 Western Blot (Recombinant protein)  
 Antibody Production  
 Protein Array

**Notes**

Best use within three months from the date of receipt of this protein.

**Storage**

Store at -8 centigrade. Aliquot to avoid repeated freezing and thawing.

**Storage Buffer**

50 mM Tris-HCl, 10 mM reduced Glutathione, pH=8.0 in the elution buffer.

## GENE INFORMATION

**Gene Name**

[GSS glutathione synthetase \[ Homo sapiens \]](#)

**Official Symbol**

[GSS](#)

**Synonyms**

GSS; glutathione synthetase; GSH-S; GSH synthetase; glutathione synthase; GSHS; MGC14098;

**Gene ID**

[2937](#)

**mRNA Refseq**

[NM\\_000178](#)

**Protein Refseq**

[NP\\_000169](#)

**MIM**

[601002](#)

**UniProt ID**

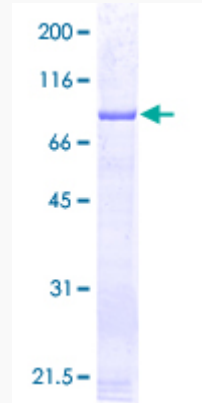
[P48637](#)

 Tel: 1-631-559-9269 1-516-512-3133

 Email: [info@creative-biomart.com](mailto:info@creative-biomart.com)  Fax: 1-631-938-8127

 45-1 Ramsey Road, Shirley, NY 11967, USA

**Quality Control  
Testing**



12.5% SDS-PAGE Stained with Coomassie Blue.

 Tel: 1-631-559-9269 1-516-512-3133

 Email: [info@creative-biomart.com](mailto:info@creative-biomart.com)  Fax: 1-631-938-8127

 45-1 Ramsey Road, Shirley, NY 11967, USA