

## Recombinant Chicken GSTA3 protein, His & T7-tagged

Cat. No. GSTA3-754C Lot. No. (See product label)

### SPECIFICATION

<b>Product Overview</b>	Recombinant Chicken GSTA3 aa. (Met1~His229 (Accession # P26697)) fused with N-terminal His & T7 tag was produced in E. coli cells.
<b>Species</b>	Chicken
<b>Source</b>	E.coli
<b>ProteinLength</b>	Met1~His229
<b>Form</b>	Freeze-dried powder
<b>Molecular Mass</b>	Predicted Molecular Mass: 30.0kDa
<b>Endotoxin</b>	<1.0EU per 1g (determined by the LAL method)
<b>Purity</b>	>95%
<b>Characteristic</b>	The isoelectric point is 9.1.
<b>Applications</b>	SDS-PAGE; WB; ELISA; IP.
<b>Stability</b>	The thermal stability is described by the loss rate. The loss rate was determined by accelerated thermal degradation test, that is, incubate the protein at 37°C for 48h, and no obvious degradation and precipitation were observed. The loss rate is less than 5% within the expiration date under appropriate storage condition.

 Tel: 1-631-559-9269 1-516-512-3133

 Email: [info@creative-biomart.com](mailto:info@creative-biomart.com)  Fax: 1-631-938-8127

 45-1 Ramsey Road, Shirley, NY 11967, USA

**Storage** Avoid repeated freeze/thaw cycles. Store at 2-8°C for one month. Aliquot and store at -80°C for 12 months.

**Storage buffer** Supplied as lyophilized form in 20mM Tris, 150mM NaCl, pH8.0, containing 1mM EDTA, 1mM DTT, 0.01% sarcosyl, 5% trehalose, and preservative.

**Reconstitution** Reconstitute in sterile ddH<sub>2</sub>O.

## GENE INFORMATION

**Gene Name** [GSTA3 glutathione S-transferase alpha 3 \[ Gallus gallus \(chicken\) \]](#)

**Official Symbol** [GSTA3](#)

**Synonyms** GST; GSTA1; GST class-alpha; glutathione S-transferase A1; glutathione S-transferase alpha 1; glutathione S-transferase

**Gene ID** [414896](#)

**mRNA Refseq** [NM\\_001001777.1](#)

**Protein Refseq** [NP\\_001001777.1](#)

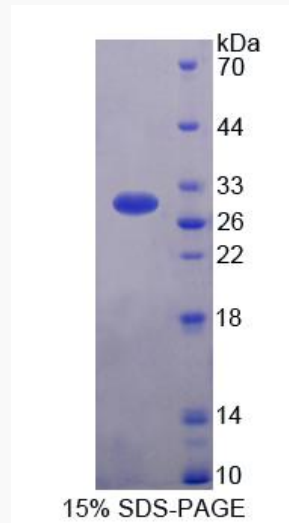
**UniProt ID** [P26697](#)

 Tel: 1-631-559-9269 1-516-512-3133

 Email: [info@creative-biomart.com](mailto:info@creative-biomart.com)  Fax: 1-631-938-8127

 45-1 Ramsey Road, Shirley, NY 11967, USA

**SDS-PAGE**



 Tel: 1-631-559-9269 1-516-512-3133

 Email: [info@creative-biomart.com](mailto:info@creative-biomart.com)  Fax: 1-631-938-8127

 45-1 Ramsey Road, Shirley, NY 11967, USA