

Recombinant Human GSTM1 Protein, GST-tagged

Cat. No. GSTM1-4415H Lot. No. (See product label)

SPECIFICATION

Product Overview Human GSTM1 full-length ORF (AAH24005, 1 a.a. - 181 a.a.) recombinant protein with GST-tag at N-terminal.

Species Human

Source Wheat Germ

Description Cytosolic and membrane-bound forms of glutathione S-transferase are encoded by two distinct supergene families. At present, eight distinct classes of the soluble cytoplasmic mammalian glutathione S-transferases have been identified: alpha, kappa, mu, omega, pi, sigma, theta and zeta. This gene encodes a glutathione S-transferase that belongs to the mu class. The mu class of enzymes functions in the detoxification of electrophilic compounds, including carcinogens, therapeutic drugs, environmental toxins and products of oxidative stress, by conjugation with glutathione. The genes encoding the mu class of enzymes are organized in a gene cluster on chromosome 1p13.3 and are known to be highly polymorphic. These genetic variations can change an individuals susceptibility to carcinogens and toxins as well as affect the toxicity and efficacy of certain drugs. Null mutations of this class mu gene have been linked with an increase in a number of cancers, likely due to an increased susceptibility to environmental toxins and carcinogens. Multiple protein isoforms are encoded by transcript variants of this gene. [provided by RefSeq

Molecular Mass 45.65 kDa

 Tel: 1-631-559-9269 1-516-512-3133

 Email: info@creative-biomart.com  Fax: 1-631-938-8127

 45-1 Ramsey Road, Shirley, NY 11967, USA

AA Sequence	MPMILGYWDIRGLAHAIRLLLEYTDSSYEKKYTMGDAPDYDRSQWLNEKFKLGLDF PNLPYLIDGAHKITQSNAILCYIARKHNLCGETEEEEKIRVDILENQTMDNHMQLMICY NPEFEKLPKYLEELPEKLLKLYSEFLGKRPWFAGNKGLEKISAYMKSSRFLPRPVFS KMAVWGNK
Applications	Enzyme-linked Immunoabsorbent Assay Western Blot (Recombinant protein) Antibody Production Protein Array
Notes	Best use within three months from the date of receipt of this protein.
Storage	Store at -8 centigrade. Aliquot to avoid repeated freezing and thawing.
Storage Buffer	50 mM Tris-HCl, 10 mM reduced Glutathione, pH=8.0 in the elution buffer.

GENE INFORMATION

Gene Name	GSTM1 glutathione S-transferase mu 1 [Homo sapiens]
Official Symbol	GSTM1
Synonyms	GSTM1; glutathione S-transferase mu 1; glutathione S transferase M1 , GST1; glutathione S-transferase Mu 1; H B; MU; HB subunit 4; GST class-mu 1; GST HB subunit 4; glutathione S-transferase M1; glutathione S-aryltransferase; glutathione S-alkyltransferase; glutathione S-aralkyltransferase; S-(hydroxyalkyl)glutathione lyase; H-B; GST1; GTH4; GTM1; MU-1; GSTM1-1; GSTM1a-1a; GSTM1b-1b; MGC26563;
Gene ID	2944
mRNA Refseq	NM_000561

 Tel: 1-631-559-9269 1-516-512-3133

 Email: info@creative-biomart.com  Fax: 1-631-938-8127

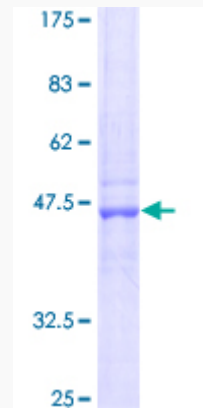
 45-1 Ramsey Road, Shirley, NY 11967, USA

Protein Refseq NP_000552

MIM 138350

UniProt ID P09488

Quality Control
Testing



12.5% SDS-PAGE Stained with Coomassie Blue.

Tel: 1-631-559-9269 1-516-512-3133

Email: info@creative-biomart.com Fax: 1-631-938-8127

45-1 Ramsey Road, Shirley, NY 11967, USA