

Recombinant Human GSTM2 Protein (Met3-Lys218), N-His tagged

Cat. No. GSTM2-2553H **Lot. No.** (See product label)

SPECIFICATION

Product Overview	Recombinant human GSTM2 (Met3-Lys218) protein fused with the N-His tag was expressed in E. coli.
Species	Human
Source	E.coli
ProteinLength	Met3-Lys218
Molecular Mass	27.83 kDa
Purity	>90 % as determined by SDS-PAGE.
Notes	For research use only.
Storage	Use a manual defrost freezer and avoid repeated freeze thaw cycles. Store at 2 to 8 centigrade for one week. Store at -20 to -80 centigrade for twelve months from the date of receipt.
Storage Buffer	0.01M PBS, pH 7.4, 0.02 % NLS
Reconstitution	Reconstitute in sterile water for a stock solution.
Shipping	In general, proteins are provided as lyophilized powder/frozen liquid. They are

 Tel: 1-631-559-9269 1-516-512-3133

 Email: info@creative-biomart.com  Fax: 1-631-938-8127

 45-1 Ramsey Road, Shirley, NY 11967, USA

shipped out with dry ice/blue ice unless customers require otherwise.

GENE INFORMATION

Gene Name [GSTM2 glutathione S-transferase mu 2 \(muscle\) \[Homo sapiens \(human\) \]](#)

Official Symbol [GSTM2](#)

Synonyms [GSTM2](#); glutathione S-transferase mu 2 (muscle); glutathione S transferase M2 (muscle); glutathione S-transferase Mu 2; GST4; GST, muscle; GST class-mu 2; glutathione S-transferase 4; glutathione S-transferase M1; glutathione S-aryltransferase M2; glutathione S-alkyltransferase M2; glutathione S-aralkyltransferase M2; S-(hydroxyalkyl) glutathione lyase M2; glutathione S-transferase M2 (muscle); GSTM; GTHMUS; GSTM2-2; MGC117303;

Gene ID [2946](#)

mRNA Refseq [NM_000848](#)

Protein Refseq [NP_000839](#)

MIM [138380](#)

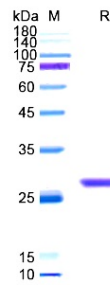
UniProt ID [P28161](#)

 Tel: 1-631-559-9269 1-516-512-3133

 Email: info@creative-biomart.com  Fax: 1-631-938-8127

 45-1 Ramsey Road, Shirley, NY 11967, USA

SDS-PAGE



 Tel: 1-631-559-9269 1-516-512-3133

 Email: info@creative-biomart.com  Fax: 1-631-938-8127

 45-1 Ramsey Road, Shirley, NY 11967, USA