

Recombinant Human GSTM2 Protein, GST-tagged

Cat. No. GSTM2-4418H Lot. No. (See product label)

SPECIFICATION

Product Overview	Human GSTM2 partial ORF (NP_000839, 90 a.a. - 189 a.a.) recombinant protein with GST-tag at N-terminal.
Species	Human
Source	Wheat Germ
Description	Cytosolic and membrane-bound forms of glutathione S-transferase are encoded by two distinct supergene families. At present, eight distinct classes of the soluble cytoplasmic mammalian glutathione S-transferases have been identified: alpha, kappa, mu, omega, pi, sigma, theta and zeta. This gene encodes a glutathione S-transferase that belongs to the mu class. The mu class of enzymes functions in the detoxification of electrophilic compounds, including carcinogens, therapeutic drugs, environmental toxins and products of oxidative stress, by conjugation with glutathione. The genes encoding the mu class of enzymes are organized in a gene cluster on chromosome 1p13.3 and are known to be highly polymorphic. These genetic variations can change an individuals susceptibility to carcinogens and toxins as well as affect the toxicity and efficacy of certain drugs. [provided by RefSeq
Molecular Mass	36.74 kDa
AA Sequence	SEKEQIREIDILENQFMDSRMQLAKLCYDPDFEKLKPEYLQALPEMLKLYSQFLGKQP WFLGDKITFVDFIAYDVLERNQVFEPSCLDAFPNLKDFISRFE
Applications	Enzyme-linked Immunoabsorbent Assay

 Tel: 1-631-559-9269 1-516-512-3133

 Email: info@creative-biomart.com  Fax: 1-631-938-8127

 45-1 Ramsey Road, Shirley, NY 11967, USA

Western Blot (Recombinant protein)
Antibody Production
Protein Array

Notes	Best use within three months from the date of receipt of this protein.
Storage	Store at -8 centigrade. Aliquot to avoid repeated freezing and thawing.
Storage Buffer	50 mM Tris-HCl, 10 mM reduced Glutathione, pH=8.0 in the elution buffer.

GENE INFORMATION

Gene Name	GSTM2 glutathione S-transferase mu 2 (muscle) [Homo sapiens]
Official Symbol	GSTM2
Synonyms	GSTM2; glutathione S-transferase mu 2 (muscle); glutathione S transferase M2 (muscle); glutathione S-transferase Mu 2; GST4; GST, muscle; GST class-mu 2; glutathione S-transferase 4; glutathione S-transferase M1; glutathione S-aryltransferase M2; glutathione S-alkyltransferase M2; glutathione S-aralkyltransferase M2; S-(hydroxyalkyl)glutathione lyase M2; glutathione S-transferase M2 (muscle); GSTM; GTHMUS; GSTM2-2; MGC117303;
Gene ID	2946
mRNA Refseq	NM_000848
Protein Refseq	NP_000839
MIM	138380

 Tel: 1-631-559-9269 1-516-512-3133

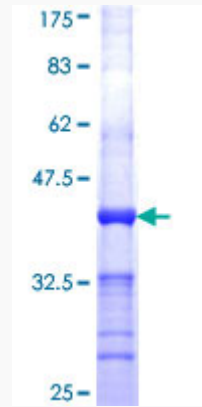
 Email: info@creative-biomart.com  Fax: 1-631-938-8127

 45-1 Ramsey Road, Shirley, NY 11967, USA

UniProt ID

P28161

Quality Control
Testing



12.5% SDS-PAGE Stained with Coomassie Blue.

 Tel: 1-631-559-9269 1-516-512-3133

 Email: info@creative-biomart.com  Fax: 1-631-938-8127

 45-1 Ramsey Road, Shirley, NY 11967, USA