

Recombinant Chicken GSTM2 protein, His-tagged

Cat. No. GSTM2-737C **Lot. No.** (See product label)

SPECIFICATION

Product Overview	Recombinant Chicken GSTM2 aa. (Met1~Glu220 (Accession # P20136)) fused with N-terminal His tag was produced in E. coli cells.
Species	Chicken
Source	E.coli
ProteinLength	Met1~Glu220
Description	Conjugation of reduced glutathione to a wide number of exogenous and endogenous hydrophobic electrophiles.
Form	Freeze-dried powder
Molecular Mass	Predicted Molecular Mass: 27.1kDa
Endotoxin	<1.0EU per 1g (determined by the LAL method)
Purity	>95%
Characteristic	The isoelectric point is 7.1.
Applications	SDS-PAGE; WB; ELISA; IP.
Stability	The thermal stability is described by the loss rate. The loss rate was determined by

 Tel: 1-631-559-9269 1-516-512-3133

 Email: info@creative-biomart.com  Fax: 1-631-938-8127

 45-1 Ramsey Road, Shirley, NY 11967, USA

accelerated thermal degradation test, that is, incubate the protein at 37°C for 48h, and no obvious degradation and precipitation were observed. The loss rate is less than 5% within the expiration date under appropriate storage condition.

Storage

Avoid repeated freeze/thaw cycles. Store at 2-8°C for one month. Aliquot and store at -80°C for 12 months.

Storage buffer

Supplied as lyophilized form in PBS, pH7.4, containing 5% sucrose, 0.01% sarcosyl.

Reconstitution

Reconstitute in sterile PBS, pH7.2-pH7.4.

GENE INFORMATION

Gene Name

[GSTM2 glutathione S-transferase mu 2 \(muscle\) \[Gallus gallus \(chicken\) \]](#)

Official Symbol

[GSTM2](#)

Synonyms

GST class-mu; GST-CL2; GSTM1-1; glutathione S-transferases CL2; glutathione S-transferase 2

Gene ID

[395976](#)

mRNA Refseq

[NM_205090.1](#)

Protein Refseq

[NP_990421.1](#)

UniProt ID

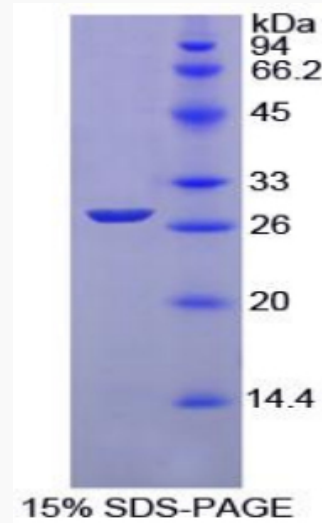
[P20136](#)

 Tel: 1-631-559-9269 1-516-512-3133

 Email: info@creative-biomart.com  Fax: 1-631-938-8127

 45-1 Ramsey Road, Shirley, NY 11967, USA

SDS-PAGE



 Tel: 1-631-559-9269 1-516-512-3133

 Email: info@creative-biomart.com  Fax: 1-631-938-8127

 45-1 Ramsey Road, Shirley, NY 11967, USA