

Active Recombinant Human GSTM3 Protein (1-225aa), N-His tagged

Cat. No. GSTM3-12H Lot. No. (See product label)

SPECIFICATION

Product Overview

Recombinant human GSTM3 protein (1-225aa), fused to His-tag at N-terminus, was expressed in E. coli and purified by using conventional chromatography techniques.

Species

Human

Source

E.coli

ProteinLength

1-225aa

Description

Cytosolic and membrane-bound forms of glutathione S-transferase are encoded by two distinct supergene families. At present, eight distinct classes of the soluble cytoplasmic mammalian glutathione S-transferases have been identified: alpha, kappa, mu, omega, pi, sigma, theta and zeta. This gene encodes a glutathione S-transferase that belongs to the mu class. The mu class of enzymes functions in the detoxification of electrophilic compounds, including carcinogens, therapeutic drugs, environmental toxins and products of oxidative stress, by conjugation with glutathione. The genes encoding the mu class of enzymes are organized in a gene cluster on chromosome 1p13.3 and are known to be highly polymorphic. These genetic variations can change an individual's susceptibility to carcinogens and toxins as well as affect the toxicity and efficacy of certain drugs. Mutations of this class mu gene have been linked with a slight increase in a number of cancers, likely due to exposure with environmental toxins. Alternative splicing results in multiple transcript variants.

 Tel: 1-631-559-9269 1-516-512-3133

 Email: info@creative-biomart.com  Fax: 1-631-938-8127

 45-1 Ramsey Road, Shirley, NY 11967, USA

Form	Liquid
Bio-activity	> 15,000 pmol/min/μg, and is defined as the amount of enzyme that conjugate 1.0 μmole of 1-chloro-2,4-dinitrobenzene (CDNB) with reduced glutathione per minute at pH 6.5 at 25 centigrade.
Molecular Mass	29.1 kDa (249aa) confirmed by MALDI-TOF
AA Sequence	MGSSHHHHHSSGLVPRGSHMGSHMSCCESSMVLGYWDIRGLAHAIRLLLEFTDTS YEEKRYTCGEAPDYDRSQWLDVKFKLDLDFPNLPYLLDGKNKITQSNAILRYIARKH NMCGETEEEEKIRVDIENQVMDFRTQLIRLCYSSDHEKLPQYLEELPGQLKQFSMFL GKFSWFAGEKLTFFVDFLTIDLDQNRIFDPKCLDEFPNLKAFMCRFEALEKIAAYLQS DQFCKMPINNKMAQWGNKPVC
Purity	> 95% by SDS-PAGE
Applications	SDS-PAGE, Enzyme Activity
Storage	Can be stored at +2 to +8 centigrade for 1 week. For long term storage, aliquot and store at -20 to -80 centigrade. Avoid repeated freezing and thawing cycles.
Concentration	1 mg/mL (determined by Bradford assay)
Storage Buffer	20mM Tris-HCl buffer (pH 8.0) containing 1mM DTT, 10% glycerol, 0.1M NaCl
GENE INFORMATION	
Gene Name	GSTM3 glutathione S-transferase mu 3 (brain) [Homo sapiens (human)]
Official Symbol	GSTM3

 Tel: 1-631-559-9269 1-516-512-3133

 Email: info@creative-biomart.com  Fax: 1-631-938-8127

 45-1 Ramsey Road, Shirley, NY 11967, USA

Synonyms GSTM3; glutathione S-transferase mu 3 (brain); glutathione S transferase M3 (brain); glutathione S-transferase Mu 3; GST5; hGSTM3-3; brain GST; GST class-mu 3; glutathione S-transferase, Mu-3; glutathione S-aryltransferase M3; glutathione S-alkyltransferase M3; glutathione S-aralkyltransferase M3; S-(hydroxyalkyl)glutathione lyase M3; glutathione S-transferase M3 (brain); brain type mu-glutathione S-transferase; GSTB; GTM3; GSTM3-3; MGC3310; MGC3704;

Gene ID [2947](#)

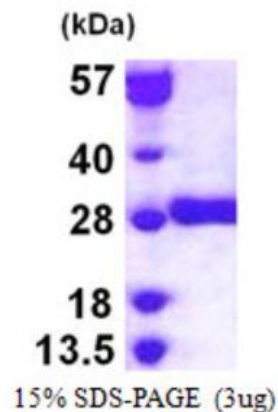
mRNA Refseq [NM_000849](#)

Protein Refseq [NP_000840](#)

MIM [138390](#)

UniProt ID [P21266](#)

SDS-PAGE



3 µg by SDS-PAGE under reducing condition and visualized by coomassie blue

 Tel: 1-631-559-9269 1-516-512-3133

 Email: info@creative-biomart.com  Fax: 1-631-938-8127

 45-1 Ramsey Road, Shirley, NY 11967, USA



stain

 Tel: 1-631-559-9269 1-516-512-3133

 Email: info@creative-biomart.com  Fax: 1-631-938-8127

 45-1 Ramsey Road, Shirley, NY 11967, USA