

# Recombinant Human GSTM3 Protein (Val8-Pro223), N-His tagged

**Cat. No.** GSTM3-2555H    **Lot. No.** (See product label)

## SPECIFICATION

<b>Product Overview</b>	Recombinant human GSTM3 (Val8-Pro223) protein fused with the N-His tag was expressed in E. coli.
<b>Species</b>	Human
<b>Source</b>	E.coli
<b>ProteinLength</b>	Val8-Pro223
<b>Molecular Mass</b>	27.91 kDa
<b>Purity</b>	>90 % as determined by SDS-PAGE.
<b>Notes</b>	For research use only.
<b>Storage</b>	Use a manual defrost freezer and avoid repeated freeze thaw cycles. Store at 2 to 8 centigrade for one week. Store at -20 to -80 centigrade for twelve months from the date of receipt.
<b>Storage Buffer</b>	0.01M PBS, pH 7.4, 0.02 % NLS
<b>Reconstitution</b>	Reconstitute in sterile water for a stock solution.
<b>Shipping</b>	In general, proteins are provided as lyophilized powder/frozen liquid. They are

 Tel: 1-631-559-9269    1-516-512-3133

 Email: [info@creative-biomart.com](mailto:info@creative-biomart.com)     Fax: 1-631-938-8127

 45-1 Ramsey Road, Shirley, NY 11967, USA

shipped out with dry ice/blue ice unless customers require otherwise.

## GENE INFORMATION

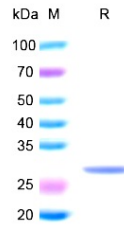
<b>Gene Name</b>	GSTM3 glutathione S-transferase mu 3 (brain) [ Homo sapiens (human) ]
<b>Official Symbol</b>	GSTM3
<b>Synonyms</b>	GSTM3; glutathione S-transferase mu 3 (brain); glutathione S transferase M3 (brain); glutathione S-transferase Mu 3; GST5; hGSTM3-3; brain GST; GST class-mu 3; glutathione S-transferase, Mu-3; glutathione S-aryltransferase M3; glutathione S-alkyltransferase M3; glutathione S-aralkyltransferase M3; S-(hydroxyalkyl) glutathione lyase M3; glutathione S-transferase M3 (brain); brain type mu-glutathione S-transferase; GSTB; GTM3; GSTM3-3; MGC3310; MGC3704;
<b>Gene ID</b>	2947
<b>mRNA Refseq</b>	NM_000849
<b>Protein Refseq</b>	NP_000840
<b>MIM</b>	138390
<b>UniProt ID</b>	P21266

 Tel: 1-631-559-9269 1-516-512-3133

 Email: [info@creative-biomart.com](mailto:info@creative-biomart.com)  Fax: 1-631-938-8127

 45-1 Ramsey Road, Shirley, NY 11967, USA

**SDS-PAGE**



 Tel: 1-631-559-9269 1-516-512-3133

 Email: [info@creative-biomart.com](mailto:info@creative-biomart.com)  Fax: 1-631-938-8127

 45-1 Ramsey Road, Shirley, NY 11967, USA