

# Recombinant Full Length Human GSTO1 Protein, C-Flag-tagged

**Cat. No.** GSTO1-1351HFL    **Lot. No.** (See product label)

## SPECIFICATION

### Product Overview

Recombinant Full Length Human GSTO1 Protein, fused to Flag-tag at C-terminus, was expressed in Mammalian cells.

### Species

Human

### Source

Mammalian Cells

### Description

The protein encoded by this gene is an omega class glutathione S-transferase (GST) with glutathione-dependent thiol transferase and dehydroascorbate reductase activities. GSTs are involved in the metabolism of xenobiotics and carcinogens. The encoded protein acts as a homodimer and is found in the cytoplasm. Three transcript variants encoding different isoforms have been found for this gene.

### Form

25 mM Tris HCl, pH 7.3, 100 mM glycine, 10% glycerol.

### Molecular Mass


27.4 kDa

### AA Sequence

MSGESARSLGKGSAPPGPVPEGSIRIYSMRFCPFAERTRLVLKAKGIRHEVININLKN  
 KPEWFFKKNPFG LVPVLENSQGQLIYESAITCEYLDEAYPGKLLPDDPYEKACQK  
 MILELFSKVPSLVGSFIRSQNKEDYA GLKEEFRKEFTKLEEVLTNKKTTFFGGNSISM  
 IDYLIWPWFERLEAMKLNEDVDHTPKLKLWMAAMKEDP  
 TVSALLTSEKDWQGFLELYLQNSPEACDYGLSGPTRTRPLEQKLISEEDLAANDILDY  
 KDDDDKV

 Tel: 1-631-559-9269    1-516-512-3133

 Email: [info@creative-biomart.com](mailto:info@creative-biomart.com)     Fax: 1-631-938-8127

 45-1 Ramsey Road, Shirley, NY 11967, USA

<b>Purity</b>	> 80% as determined by SDS-PAGE and Coomassie blue staining.
<b>Stability</b>	Stable for 12 months from the date of receipt of the product under proper storage and handling conditions. Avoid repeated freeze-thaw cycles.
<b>Storage</b>	Store at -80 centigrade.
<b>Concentration</b>	>50 ug/mL as determined by microplate BCA method.
<b>Preparation</b>	Recombinant protein was captured through anti-DDK affinity column followed by conventional chromatography steps.
<b>Protein Families</b>	Druggable Genome
<b>Protein Pathways</b>	Drug metabolism - cytochrome P450, Glutathione metabolism, Metabolism of xenobiotics by cytochrome P450
<b>Full Length</b>	Full L.

## GENE INFORMATION

<b>Gene Name</b>	<a href="#">GSTO1 glutathione S-transferase omega 1 [ Homo sapiens (human) ]</a>
<b>Official Symbol</b>	<a href="#">GSTO1</a>
<b>Synonyms</b>	P28; SPG-R; GSTO 1-1; GSTTLp28; HEL-S-21
<b>Gene ID</b>	<a href="#">9446</a>
<b>mRNA Refseq</b>	<a href="#">NM_004832.3</a>

 Tel: 1-631-559-9269 1-516-512-3133

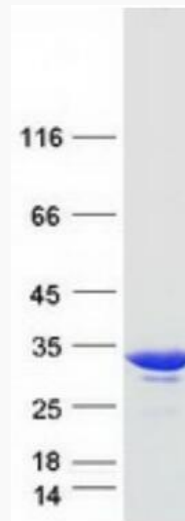
 Email: [info@creative-biomart.com](mailto:info@creative-biomart.com)  Fax: 1-631-938-8127

 45-1 Ramsey Road, Shirley, NY 11967, USA

**Protein Refseq** NP\_004823.1

**MIM** 605482

**UniProt ID** P78417



Coomassie blue staining of purified GSTO1 protein.

 Tel: 1-631-559-9269 1-516-512-3133

 Email: [info@creative-biomart.com](mailto:info@creative-biomart.com)  Fax: 1-631-938-8127

 45-1 Ramsey Road, Shirley, NY 11967, USA